

SONY®

NTSC

Surveillance and IP Monitoring Systems



General Catalog
2005-2006

TABLE OF CONTENTS

INTRODUCTION

| | |
|-------------------------------------|---|
| Camera Technologies | 1 |
| Image Processing Technologies | 3 |
| Network Technologies | 4 |

CAMERAS & HOUSINGS

| | |
|-----------------------|----|
| Network Cameras | 5 |
| Analog Cameras | 11 |
| Camera Adaptors | 17 |
| UniPak™ Cameras | 18 |
| SNC Housings | 19 |

SYSTEMS AND SOFTWARE

| | |
|---------------------------------------|----|
| Intelligent Monitoring Software | 21 |
|---------------------------------------|----|

VIDEO NETWORK STATION

| | |
|-------|----|
| | 22 |
|-------|----|

DIGITAL HARD DISK RECORDER

| | |
|-------|----|
| | 23 |
|-------|----|

MONITORS

| | |
|-------|----|
| | 24 |
|-------|----|

SPECIFICATIONS

| | |
|----------------------------------|----|
| Network Cameras | 25 |
| Analog Cameras | 31 |
| Camera Adaptors | 34 |
| Video Network Station | 35 |
| Digital Hard Disk Recorder | 36 |
| Systems and Software | 36 |
| Monitors | 37 |

SYSTEM CONFIGURATIONS

| | |
|-----------------------|----|
| Analog Cameras | 38 |
| Network Cameras | 40 |

GLOSSARY

| | |
|-------|----|
| | 42 |
|-------|----|

INDEX

| | |
|-------|----|
| | 43 |
|-------|----|

INTRODUCTION

Camera Technologies

SuperExwave™ Technology (SSC-E473/SSC-E453)

During nighttime monitoring applications, camera sensitivity is one of the most important factors in capturing a clear image.

Sony cameras that incorporate SuperExwave technology achieve extremely high sensitivity levels especially in the near infrared wavelength region of the electromagnetic spectrum. As a result, sensitivity levels in the visible wavelength region are increased by approximately 10%, while the sensitivity in the near infrared region is increased by approximately 50% when compared to Exwave HAD® technology. Sony SuperExwave cameras employ advanced photo-diode sensors capable of capturing a great amount of light in the near infrared region while efficiently converting this light to electric signals thus achieving high-sensitivity levels.

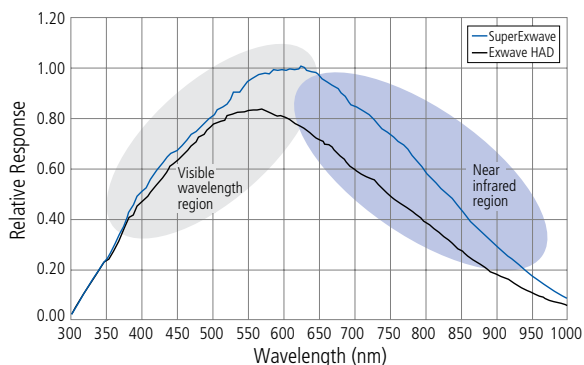


<SuperExwave>

<Exwave HAD>

Shooting environment: LED lights (wavelength 950 nm, irradiation distance 1 m), Dark room

Fig.1 SuperExwave vs Exwave HAD Image Comparison



*This chart has been simplified to show the difference in sensitivity between SuperExwave and Exwave HAD. The values are for reference only.

Fig.2 SuperExwave vs Exwave HAD Spectral Sensitivity Comparison

(Images simulated)

DynaView™ Technology (SSC-DC590/SSC-DC593)

Newly developed DynaView technology achieves an incredible dynamic range that is 128 times wider than conventional cameras. Users can capture clear images even in extreme high-contrast lighting environments. By activating the DynaView mode, the camera will capture the same image twice - first with a normal shutter speed, and then with a high shutter speed. The newly developed LSI technology then combines the dark areas captured at normal shutter speed with the bright areas captured at high shutter speed to create one image.

The result is an extremely high-contrast picture that is unattainable with a conventional camera. (See Fig. 3) Additionally, DynaView technology allows the cameras to achieve more powerful Back- Light Compensation (BLC). While conventional BLC can result in over exposure when capturing background images, DynaView technology reduces this to a minimum by using a high shutter speed for the background, which consequently provides optimum exposure for both the subject and the background.

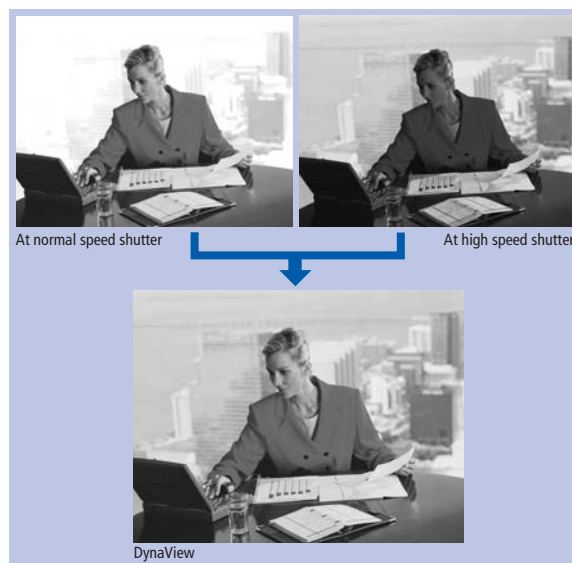


Fig.3 DynaView Technology

Variable Gamma Curve (SSC-DC590/SSC-DC593/SSC-DC80/SSC-DC83)

Users can choose from four preset gamma curves, including two unique gamma curves, so that the brightness levels of captured images are controlled precisely. Images in their entirety can be displayed clearly and accurately. (i.e. not too bright and not too dark). (See Fig. 4)

One of the two unique gamma curves reduces the brightness level of the dark portions of the image, while increasing the brightness level of the bright portions of the image, which is ideal for scenes that have very little contrast (SCENE 2; See Fig. 5).

The other unique gamma curve increases the brightness level of the dark portions of the image, while reducing the brightness level of the bright portions of the image (SCENE 3; See Fig. 5).

By selecting a gamma curve that is appropriate for a given scene, captured images can be reproduced clearly and sharply.

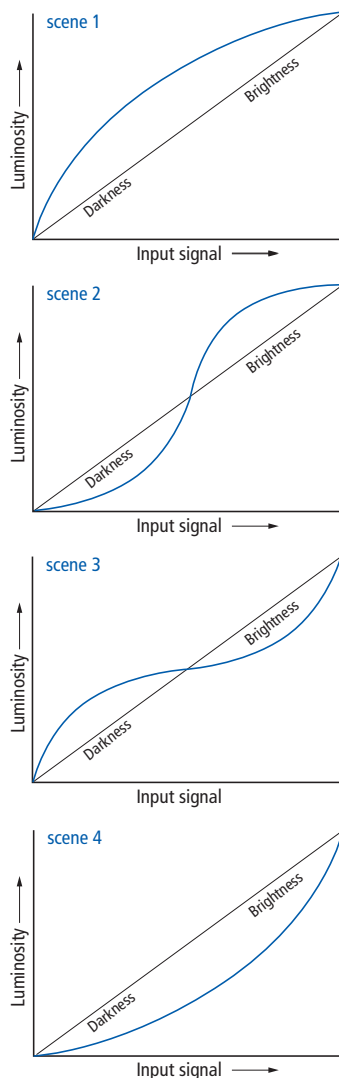


Fig.4 Four Preset Gamma Curves

SCENE 2



SCENE 3

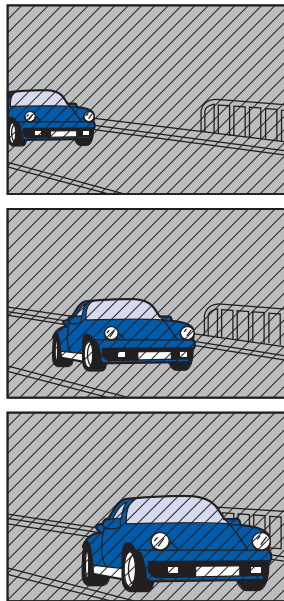


Image Processing Technologies

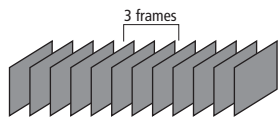
JPEG vs. MPEG-4

JPEG compression, which is conventionally used in surveillance and monitoring systems is very good for capturing high-quality still images. MPEG-4, on the other hand, is ideal for image transfer over a network while maintaining high-quality moving images. This is because MPEG-4 requires a relatively small amount of network bandwidth as a result of its structure as can be seen below.

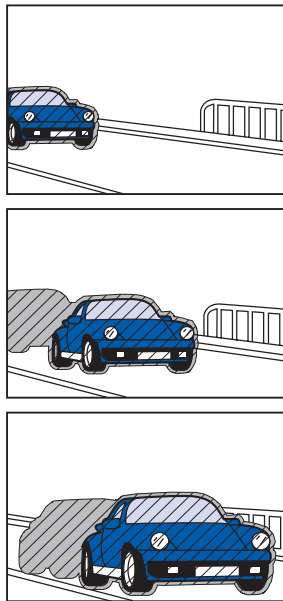
JPEG



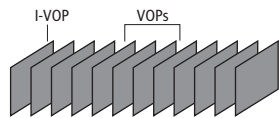
At 30 fps, 1 sec = 30 images



MPEG-4



1 GOV, 1 sec = 1 I-VOP and 29 P-VOPs



Note: Each frame in MPEG-4 is referred to as a Video Object Plane (VOP). A Group of VOPs (GOV) comprises one second* of video. An I-VOP is the first (Initial) "frame" of a GOV and is often referred to as an "anchor." The I-VOP is similar to a JPEG image. P-VOPs are "Predictive" VOPs and only "captures" movement relative to the previous VOP.

*The default GOV setting for Sony MPEG-4 cameras is one second. The length of a GOV can be set between one and five seconds.

Rough Calculation of Data Size

JPEG

With JPEG at 30 fps, 1 sec = 30 images. Assuming each JPEG image is 30 KB in size, then one second of video is 900 KB. At 8 bits per Byte, this translates to **7.2 Mb/s**.

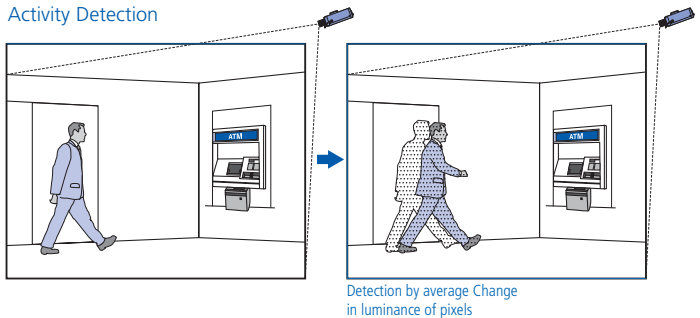
MPEG-4

With MPEG-4, the I-VOP is approximately 30 KB in size. Assuming there is little movement in the image, each P-VOP is approximately 2 KB in size. This means that 1 second of data is approximately 88 KB. Again, using the same calculations as above, this translates to **704 Kb/s**. This is approximately 1/10th the size of JPEG data.

Activity Detection vs. Motion Detection (SNC Series Cameras)

The following is a brief explanation outlining the differences between Motion Detection and Activity Detection: The general difference in concept between the two detection methods is that Motion Detection utilizes vector information associated with movement while Activity Detection utilizes the difference in illumination between frames. Activity Detection is available with JPEG compression while Motion Detection is available with MPEG-4 compression.

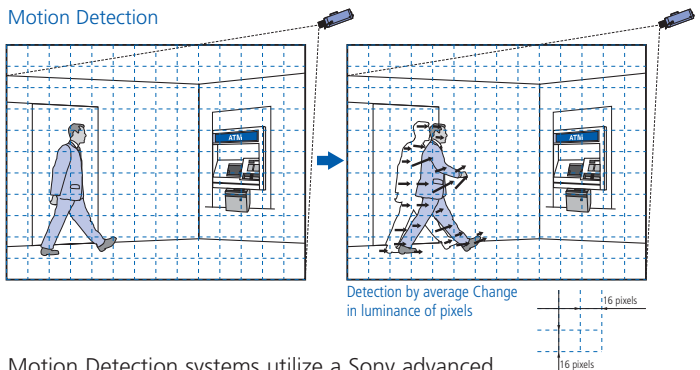
Activity Detection



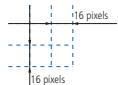
Detection by average Change in luminance of pixels

Sony Activity Detection systems utilize hardware that performs difference calculations in luminance between frames. The absolute value of the difference in luminance of each pixel is taken from one frame to the next. If the sum of the difference is greater than a preset threshold, then an alarm is triggered.

Motion Detection



Detection by average Change in luminance of pixels



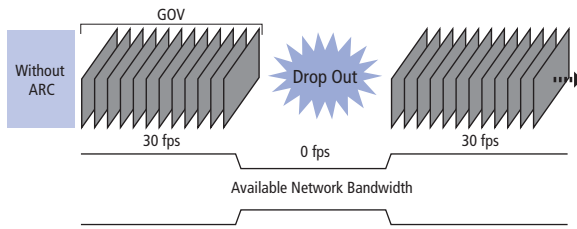
Motion Detection systems utilize a Sony advanced algorithm to determine whether or not there is actual movement in the camera viewing area. This algorithm is based on vector information available and inherent in MPEG-4 compression. The vector information is determined based on the amount of movement in 16 x 16 pixel-areas in the grid.

Motion Detection has an advantage over Activity Detection because it can reduce the number of false alarms caused by noise. Other advantages of Sony systems that use Motion Detection are that up to four distinct Motion Detection areas can be assigned, and real time indicators are available to monitor sensitivity and threshold levels.

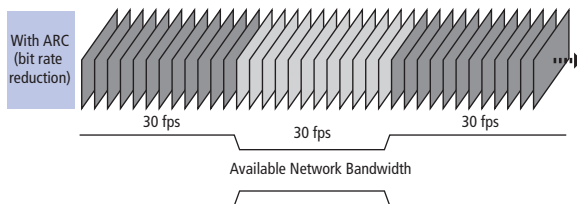
Network Technologies

Adaptive Rate Control (ARC)

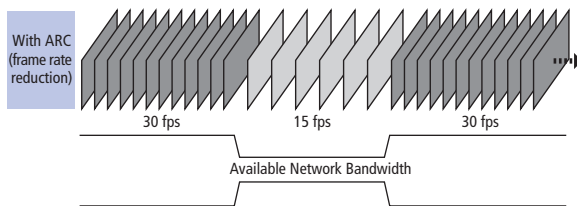
ARC is a feature that adjusts the compression bit rate and the frame rate of MPEG-4 data in order to meet changing traffic conditions over a network. Round Trip Time (RTT) and actual IP packet loss are both monitored to determine traffic conditions, and the bit rate and frame rate are adjusted automatically. "Drop Outs" (a breakup in transmitted images) can be avoided when a system is equipped with the ARC feature. The following is a graphical representation of how ARC works:



Without an ARC feature, as the available network bandwidth is reduced due to high-traffic conditions, "Drop Outs" occur.



With ARC, as the available network bandwidth is reduced due to high-traffic conditions, the MPEG-4 data bit rate is reduced. This lowers image resolution slightly, but smooth moving images are still transferred.



If network traffic conditions continue to increase, then the ARC feature lowers the frame rate of the data so that dropouts do not occur and a continuous image stream is transferred. This method still provides smooth moving images at a lower frame rate.

NETWORK CAMERAS

SNC-RX550N



IPELA™

IPELA is Sony's vision of the ultimate workplace, designed to revolutionize the way business communicates over global IP networks. Utilizing Sony's line of high quality, IP-ready videoconferencing and monitoring products, communication is delivered in high-resolution images and naturally clear audio – with a quality never before achieved.

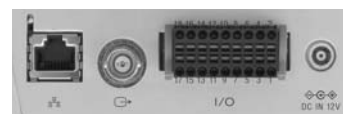
- High performance IP network color camera with integrated pan/tilt/zoom
- Remote monitoring from PCs using Microsoft Internet Explorer or Sony's IMZ-RS Series Intelligent Monitoring Software
- 100Base-TX/10Base-T Ethernet
- Pan/Tilt operation - 360 degree endless Pan / 90 degree Tilt range
- Integral 26x auto-focus zoom lens covers a wide range of viewing angles
- High picture quality - 1/4type Exwave HAD CCD
- High sensitivity - 1lx(F1.6, 50IRE)
- Day/Night function - automatically senses lighting changes and switches camera mode from color to B/W or via an external trigger
- MPEG4, JPEG and H.264 multi codec compression capability
- MPEG4 and JPEG dual stream capability
- High-frame rate of up to 30fps at 640 x 480 sized image
- 3 selectable image sizes - VGA, QVGA, QQVGA
- Simultaneous access up to 20 users
- Adaptive rate control function provides smooth video over network by adjusting compression ratio and frame rate automatically (only available for MPEG4 and H.264)
- Multicasting capability (only available for MPEG4 and H.264)
- Intelligent Motion detection and alarm trigger functions
- Unattended object detection
- Image transfer using FTP or SMTP
- Pre/post-alarm recording
- Image stabilizer
- External microphone input and speaker output for audio monitoring
- Voice alert function
- Networking security features - IP filtering/Password protection
- One Type II PC card slots - supports ATA memory card, SNCA-CFW1 (IEEE802.11b wireless LAN card) with a PC card adaptor
- One Memory Stick slot - supports Memory Stick and Memory Stick Pro™
- RS-232C transparency interface for control and operation of external equipments
- Ceiling-mount operation
- Analog composite video output for local analog viewing or recording

SNC-RZ30N/2



- High performance IP network color camera with integrated pan/tilt/zoom
- JPEG compression
- Remote monitoring from PCs using Microsoft Internet Explorer® or Sony's IMZ-RS Series Intelligent Monitoring Software
- 100Base-TX/10Base-T Ethernet
- Integral 25x auto-focus zoom lens covers a wide range of viewing angles
- High-speed and quiet pan/tilt mechanism
- High picture quality - 1/6-type Super HAD™ CCD
- High sensitivity - 2.5 lx (F1.6, 50IRE)
- High-frame rate of up to 30 fps at 640 x 480 sized image
- Four selectable image sizes
- Pan/Tilt operation - 340 degree Pan range/115 degree Tilt range
- Day/Night mode - automatically senses lighting changes and switches camera mode from color to B/W or via an external trigger
- Image stabilizer
- Simultaneous access up to 50 users
- Networking security features - IP filtering/Password protection
- Activity detection and alarm trigger functions
- Image transfer using FTP or SMTP
- RS-232C/RS-485 transparency interface for control and operation of external equipments
- Two Type II PC card¹ slots - supports Memory Stick™ Media, Flash memory card, ATA HDD card and IEEE802.11b Wireless LAN Card
- Wall-mount or ceiling-mount operation
- Analog composite video output for local analog viewing or recording

¹ Please contact your local Sony sales office for compatible PC cards and wireless card.



SNC-RZ30N/2 Rear

NETWORK CAMERAS

SNC-RZ25N



IPELA™

IPELA is Sony's vision of the ultimate workplace, designed to revolutionize the way business communicates over global IP networks. Utilizing Sony's line of high quality, IP-ready videoconferencing and monitoring products, communication is delivered in high-resolution images and naturally clear audio – with a quality never before achieved.

- High performance IP network color camera with integrated pan/tilt/zoom
- MPEG-4 and JPEG compression
- Remote monitoring from PCs using Microsoft Internet Explorer or Sony's IMZ-RS Series Intelligent Monitoring Software
- 100Base-TX/10Base-T Ethernet
- Integral 18x auto-focus zoom lens covers a wide range of viewing angles
- High picture quality - 1/4-type CCD with Exwave HAD technology
- High sensitivity - 0.7 lx (F1.4, 50IRE)
- High-frame rate of up to 30 fps at 320 x 240 sized image
- Six selectable image sizes
- Pan/Tilt operation - 340 degree Pan range/120 degree Tilt range
- External microphone input and speaker output for audio monitoring
- Day/Night mode - automatically senses lighting changes and switches camera mode from color to B/W or via an external trigger
- Adaptive rate control function provides smooth video over network by adjusting compression ratio and frame rate automatically
- Multicasting capability
- Simultaneous access up to 20 (JPEG mode)/10 (MPEG mode) users
- Networking security features - IP filtering/Password protection
- Motion detection² and alarm trigger functions
- Image transfer using FTP or SMTP
- Compact Flash™ Type card slot - supports an optional SNCA-CFW1 Wireless Card or Compact Flash card
- Wall-mount or ceiling-mount operation
- Analog composite video output for local analog viewing or recording

² Motion detection function can be used when a monitoring image is set to a MPEG-4.



SNC-RZ25N Rear

SNC-Z20N



- Fixed All-in-one IP network color camera with integrated zoom lens
- JPEG compression
- Remote monitoring from PCs using Microsoft Internet Explorer or Sony's IMZ-RS Series Intelligent Monitoring Software
- 100Base-TX/10Base-T Ethernet
- Integral 18x auto-focus zoom lens covers a wide range of viewing angles
- High picture quality - 1/4-type CCD with Exwave HAD technology
- High sensitivity - Color: 0.7 lx, B/W: 0.01 lx (F1.4, 50IRE)
- High frame rate of up to 30 fps at 640 x 480 image size
- Four selectable image sizes
- Day/Night function - automatically senses lighting changes and switches camera mode from color to B/W
- Simultaneous access up to 50 users
- Networking security features - IP filtering/password protection
- Activity detection and alarm trigger functions
- Image transfer using FTP or SMTP
- One PC card slot³ - providing support for Memory Stick Media, Flash ATA memory card, and ATA HDD card
- Wireless connection capability³
- Analog composite video output for local analog viewing or recording
- RS-232C transparency interface for control and operation of external equipment
- AC 24 V or DC 12 V external power capability
- Supports power over Ethernet (IEEE803.af) compliant



SNC-Z20N Rear

³ Please contact a local Sony sales office or authorized dealer for compatible PC and wireless cards.

SNC-CS50N



IPELA™

IPELA is Sony's vision of the ultimate workplace, designed to revolutionize the way business communicates over global IP networks. Utilizing Sony's line of high quality, IP-ready videoconferencing and monitoring products, communication is delivered in high-resolution images and naturally clear audio – with a quality never before achieved.

- Fixed All-in-one IP network color camera with CS-mount auto iris vari-focal lens
- Remote monitoring from PCs using Microsoft Internet Explorer or Sony's IMZ-RS Series Intelligent Monitoring Software
- 100Base-TX/10Base-T Ethernet
- Auto-iris vari-focal lens (f3.0-8.0mm, F1.0)
- High picture quality - 1/3 type SuperExwave CCD
- High sensitivity - 0.4lux (F1.0, 50IRE)
- Day/Night function - automatically senses lighting changes and switches camera mode from color to B/W or via an external trigger
- MPEG4, JPEG and H.264 multi codec compression capability
- MPEG4 and JPEG dual stream capability
- High-frame rate of up to 30fps at 640 x 480 sized image
- 3 selectable image sizes - VGA, QVGA, QQVGA
- Simultaneous access up to 20 users
- Adaptive rate control function provides smooth video over network by adjusting compression ratio and frame rate automatically
- Multicasting capability
- Intelligent Motion detection and alarm trigger functions
- Unattended object detection
- Image transfer using FTP or SMTP
- Pre/post-alarm recording
- Image stabilizer
- External microphone input and speaker output for audio monitoring
- Voice alert function
- Networking security features - IP filtering/Password protection
- One Type II PC card slots - supports ATA memory card, Memory Stick, SNCA-CFw1 (IEEE802.11b wireless LAN card) with a PC card adaptor
- RS-232C transparency interface for control and operation of external equipments
- Analog composite video output for local analog viewing or recording
- Selectable power supply - automatically selects AC24V, DC12V or PoE for proper operation

SNC-CS3N



- Fixed All-in-one IP network color camera with CS-mount auto iris vari-focal lens
- JPEG compression
- Remote monitoring from a PC using Microsoft Internet Explorer or Sony's IMZ-RS Series Intelligent Monitoring Software
- 100Base-TX/10Base-T Ethernet
- Auto-iris vari-focal lens (f=3.0 to 8.0 mm, F1.0)
- High picture quality - 1/3-type CCD with Exwave HAD technology
- High sensitivity - 0.5 lx at F1.0
- High frame rate of up to 25 fps at 640 x 480 image size
- Four selectable image sizes
- Simultaneous access up to 50 users
- Networking security features - IP filtering/password protection
- Activity detection and alarm trigger functions
- Image transfer using FTP or SMTP
- Analog composite video output for local analog viewing or recording



SNC-CS3N Rear

NETWORK CAMERAS

SNC-DF70N



IPELA™

IPELA is Sony's vision of the ultimate workplace, designed to revolutionize the way business communicates over global IP networks. Utilizing Sony's line of high quality, IP-ready videoconferencing and monitoring products, communication is delivered in high-resolution images and naturally clear audio – with a quality never before achieved.

- All-in-one IP network mini dome color camera for both outdoor and indoor use
- MPEG-4 and JPEG compression
- Remote monitoring from PCs using Microsoft Internet Explorer or Sony's IMZ-RS Series Intelligent Monitoring Software.
- 100Base-TX/10Base-T Ethernet
- Built-in CS-mount auto iris 2.7x vari-focal lens covers wide viewing angles
- Rugged design - IP66⁴ rated
- High-picture quality - 1/4-type Super HAD CCD
- Horizontal resolution - 480 TV lines
- High sensitivity 0.9 lx (F1.0, 50IRE)
- High-frame rate of up to 30 fps at 320 x 240 sized image
- Six selectable image sizes
- External microphone input and speaker output for bidirectional audio capability
- Day/Night function - automatically senses lighting changes and switches camera mode from color to B/W or via an external trigger
- Wall-mounted or ceiling-mounted installation
- Adaptive rate control function provides smooth video over network by adjusting compression ratio and frame rate automatically
- Multicasting capability
- Simultaneous access up to 20(JPEG mode)/10(MPEG-4 mode) users
- Networking security features - IP filtering/Password protection
- Motion detection⁵ and alarm trigger function
- Pre-/Post-Alarm image storage
- Image transfer using FTP or SMTP
- Analog composite video output for local analog viewing or recording
- Supports power over Ethernet (IEEE803.af) compliant

⁴ Ingress Protection(IP) standard is a system for numerically classifying the degree of protection provided by enclosures of electrical equipment against solid objects and liquids. IP66 means there is no ingress of dust and the equipment is protected against powerful water jets.

⁵ Motion detection function can be used when a monitoring image is set to a MPEG-4.

SNC-DF40N



IPELA

- All-in-one IP network mini dome color camera
- MPEG-4 and JPEG compression
- Remote monitoring from PCs using Microsoft Internet Explorer or Sony's IMZ-RS Series Intelligent Monitoring Software.
- 100Base-TX/10Base-T Ethernet
- Easy GUI based operations
- Built-in CS-mount auto auto iris 2.7x vari-focal lens covers wide viewing angles
- High-picture quality - 1/4-type Super HAD CCD
- Horizontal resolution - 480 TV lines
- High sensitivity - 0.8 lx (F1.0, 50IRE)
- High-frame rate of up to 30 fps at 320 x 240 sized image
- Six selectable image sizes
- External microphone input and speaker output for bidirectional audio capability
- Wall-mounted or ceiling-mounted installation
- Adaptive rate control function provides smooth video over network by adjusting compression ratio and frame rate automatically
- Multicasting capability
- Simultaneous access up to 20(JPEG mode)/10(MPEG-4 mode) users
- Networking security features - IP filtering/Password protection
- Motion detection⁶ and alarm trigger function
- Pre-/Post-Alarm image storage
- Image transfer using FTP or SMTP
- Analog composite video output for local analog viewing or recording
- Supports power over Ethernet (IEEE803.af) compliant



SNC-DF40N Rear

⁶ Motion detection function can be used when a monitoring image is set to a MPEG-4.

SNC-P5



IPELA

IPELA is Sony's vision of the ultimate workplace, designed to revolutionize the way business communicates over global IP networks. Utilizing Sony's line of high quality, IP-ready videoconferencing and monitoring products, communication is delivered in high-resolution images and naturally clear audio – with a quality never before achieved.

- All-in-one IP network color camera with integrated pan/tilt/zoom
- MPEG-4 and JPEG compression
- Remote monitoring from PCs using Microsoft Internet Explorer or Sony's IMZ-RS Series Intelligent Monitoring Software.
- 100Base-TX/10Base-T Ethernet
- Easy GUI based operations
- High-frame rate of up to 30 fps at 320 x 240 sized image
- Six selectable image sizes
- External microphone input and speaker output for bidirectional audio capability
- Pan/Tilt operation - 120 degree Pan range/ 75 degree Tilt range
- Optical 3x zoom capability
- Adaptive rate control function provides smooth video over network by adjusting compression ratio and frame rate automatically
- Multicasting capability
- Simultaneous access up to 20(JPEG mode)/10(MPEG-4 mode) users
- Networking security features - IP filtering/Password protection
- Motion detection⁷ and alarm trigger function
- Pre-/Post-Alarm image storage
- Image transfer using FTP or SMTP
- Compact Flash type card slot- support for optional SNCA-CFW1 Wireless Card or Compact Flash card
- Wall-mounted or ceiling-mounted installation
- Analog composite video output for local analog viewing or recording
- Can be used in outdoor environment with the optional SNCA-HP5 Housing Kit



SNC-P5 Rear

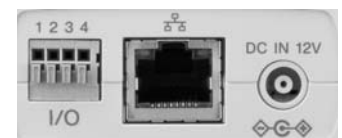
⁷ Motion detection function can be used when a monitoring image is set to a MPEG-4.

SNC-P1



IPELA

- Fixed All-in-one IP network color camera
- MPEG-4 and JPEG compression
- Compact and slim design
- Remote monitoring from PCs using Microsoft Internet Explorer or Sony's IMZ-RS Series Intelligent Monitoring Software.
- 100Base-TX/10Base-T Ethernet
- Easy GUI based operations
- High-frame rate of up to 30 fps at 320 x 240 sized image
- Six selectable image sizes
- External microphone input and speaker output for bidirectional audio capability
- Adaptive rate control function provides smooth video over network by adjusting compression ratio and frame rate automatically
- Multicasting capability
- Simultaneous access up to 20(JPEG mode)/10(MPEG-4 mode) users
- Networking security features - IP filtering/Password protection
- Motion detection⁸ and alarm trigger function
- Pre-/Post-Alarm image storage
- Image transfer using FTP or SMTP
- Desk-top, wall-mounted, or ceiling-mounted installation
- Analog composite video output for local analog viewing or recording



SNC-P1 Rear

⁸ Motion detection function can be used when a monitoring image is set to a MPEG-4.

NETWORK CAMERAS

SNC-M3/SNC-M3W



- All-in-one IP network color camera with integrated pan/tilt
- MPEG-4 and JPEG compression
- Compact and lightweight design
- Remote monitoring from PCs using Microsoft Internet Explorer
- 100Base-TX/10Base-T Ethernet
- Easy GUI based operations
- High-frame rate of up to 30 fps at 320 x 240 sized image
- Three selectable image sizes
- Built-in microphone, external microphone input and speaker output for bidirectional audio capability
- Pan/Tilt operation - 120 degree Pan range/70 degree Tilt range
- Wireless operation capability (SNC-M3W)
- Simultaneous access up to 10 users (both JPEG/MPEG-4 mode)
- Networking security features - IP filtering/Password protection
- E-mail notification function with motion detection⁹
- Desk-top, wall-mounted, or ceiling-mounted installation

⁹ Motion detection function can be used when a monitoring image is set to a MPEG-4.



SNC-M3/M3W Rear

SNC-M1/SNC-M1W



- Fixed all-in-one IP network color camera
- MPEG-4 and JPEG compression formats
- Compact and lightweight design
- Remote monitoring from PCs using Microsoft Internet Explorer
- 100Base-TX/10Base-T Ethernet
- Easy GUI based operations
- High-frame rate of up to 30 fps at 320 x 240 sized image
- Three selectable image sizes
- Built-in microphone, external microphone input and speaker output for bidirectional audio capability
- Wireless operation capability (SNC-M1W)
- Simultaneous access up to 10 users (both JPEG/MPEG-4 mode)
- Networking security features - IP filtering/Password protection
- E-mail notification function with motion detection¹⁰
- Desk-top, wall-mounted, or ceiling-mounted installation

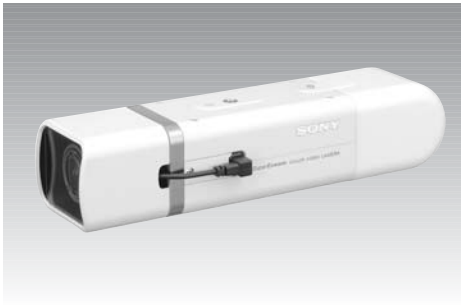
¹⁰ Motion detection function can be used when a monitoring image is set to a MPEG-4.



SNC-M1/M1W Rear

ANALOG CAMERAS

SSC-E473

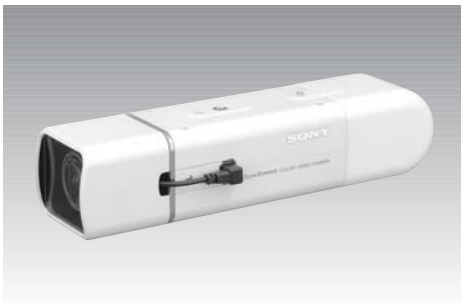


- 1/3-type CCD with SuperExwave technology
- Advanced Digital Signal Processing (DSP) technology - provides high-horizontal resolution of 540 TV lines
- Day/Night function - automatically senses lighting changes and switches camera mode from color to B/W or via an external trigger
- High sensitivity - Color: 0.55 lx, B/W: 0.05 lx (F1.2, 50IRE)
- Slim and stylish design equipped with front and rear covers
- CCD IRIS® function allows for the use of low cost manual iris lenses
- Backlight compensation: ON/OFF switchable
- AGC: TURBO/OFF switchable
- Wide range CCD IRIS function (ON/OFF switchable, 1/60 to 1/100,000 s)
- Selectable Auto White balance mode: ATW/ATW pro
- DC-Servo lens connection capability
- CS-mount
- Automatically selects AC 24 V or DC 12 V for proper operation



SSC-E473 Rear

SSC-E453



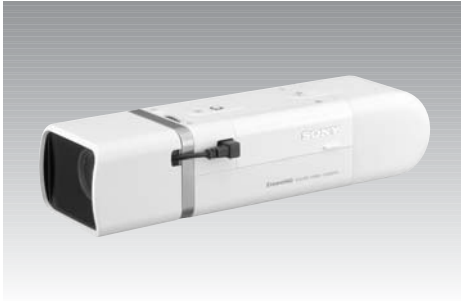
- 1/3-type CCD with SuperExwave technology
- Advanced Digital Signal Processing (DSP) technology - provides high-horizontal resolution of 540 TV lines
- High sensitivity - 0.55 lx (F1.2, 50IRE)
- Slim and stylish design equipped with front and rear covers
- CCD IRIS function allows for the use of low cost manual iris lenses
- Backlight compensation: ON/OFF switchable
- AGC: TURBO/OFF switchable
- Wide range CCD IRIS function (ON/OFF switchable, 1/60 to 1/100,000 s)
- Selectable Auto White balance mode: ATW/ATW pro
- DC-Servo lens connection capability
- CS-mount
- Automatically selects AC 24 V or DC 12 V for proper operation



SSC-E453 Rear

ANALOG CAMERAS

SSC-DC80/SSC-DC83



- 1/2-type CCD with Exwave HAD technology
- Horizontal resolution - 480TV lines
- High sensitivity - 0.4 lx (F1.2, 50IRE)
- AGC: TURBO/NORMAL/MANUAL/OFF switchable
- Aperture: SHARP/SOFT/NORMAL switchable
- White balance: ATW PRO/ATW/3200K/5600K/MANUAL switchable
- Backlight compensation: SPOT/WEIGHT/OFF switchable
- Four selectable gamma curves
- Accepts video or DC auto iris lenses
- Camera title indication
- CS/C¹¹-mount
- SSC-DC80 provides single cable operation (video/sync/power triple multiplex transmission) for easy installation with the optional YS- W170AW270A (for SSC-DC80)
- Variety of power requirements:
SSC-DC80: DC 12 V operation
SSC-DC83: automatically selects AC 24 V or DC 12 V for proper operation

¹¹ C-mount adaptor is supplied

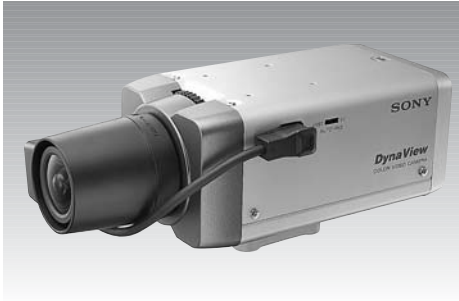


SSC-DC80 Rear



SSC-DC83 Rear

SSC-DC590/SSC-DC593



- 1/3-type CCD with DynaView technology
- Wide dynamic range with DynaView technology - ideal for obtaining clear color images under severe highlight or backlight conditions
- Day/Night function - automatically senses lighting changes and switches camera mode from color to B/W or via an external trigger
- Horizontal resolution - 480 TV lines
- High sensitivity - Color: 0.8 lx, B/W: 0.07 lx (F1.4, 50 IRE)
- AGC: TURBO/NORMAL/MANUAL/OFF switchable
- Aperture: SHARP/SOFT/NORMAL switchable
- White balance: ATW PRO/ATW/3200K/5600K/MANUAL/DUAL switchable
- Backlight compensation: DynaView/SPOT/WEIGHT/OFF switchable
- Four selectable gamma curves
- Accepts video or DC auto iris lenses
- Camera title indication
- Wide range CCD IRIS function (1/60 to 1/100,000 s, (SSC-DC590, SSC-DC593))
- Activity detection and alarm trigger functions
- Privacy Zone Masking function
- Two preset memories for camera setting
- RS-485 interface for remote control
- CS-mount
- SSC-DC590 provides single cable operation (video/sync/power triple multiplex transmission) for easy installation with the optional YS- W170A/W270A camera adaptor.
- Variety of power requirements:
 - SSC-DC590: DC 12 V operation
 - SSC-DC593: automatically selects AC 24 V or DC 12 V for proper operation



SSC-DC590 Rear



SSC-DC593 Rear

ANALOG CAMERAS

SSC-DC374



- 1/3-type Super HAD CCD
- Horizontal resolution - 480 TV lines
- High sensitivity - 0.8 lx (F1.2, 50IRE)
- Compact and lightweight design
- CCD IRIS function allows for the use of low cost manual iris lenses
- Backlight compensation: ON/OFF switchable
- AGC: TURBO/OFF switchable
- Wide range CCD IRIS function (ON/OFF switchable, 1/60 to 1/100,000 s)
- Wide range Auto Tracing White balance (ATW)
- Accepts DC auto iris lenses
- CS-mount
- AC 24 V operation



SSC-DC374 Rear

SSC-DC174



- 1/3-type CCD with Super HAD technology
- Horizontal resolution - 330 TV lines
- High sensitivity - 0.8 lx (F1.2, 50IRE)
- Digital Signal Processing (DSP) technology provides powerful picture-contrast control
- Compact and lightweight design
- CCD IRIS function allows for the use of low cost manual iris lenses
- Built-in tripod screw holes for easy installation
- Backlight compensation: ON/OFF switchable
- AGC: TURBO/OFF switchable
- Wide range CCD IRIS function (ON/OFF switchable, 1/60 to 1/100,000 s)
- Wide range Auto Tracing White balance (ATW)
- Accepts DC auto iris lenses
- CS-mount
- AC 24 V operation



SSC-DC174 Rear

SSC-M383 (B/W)



- Ideal for low light applications
- 1/3-type CCD with Exwave HAD technology
- Horizontal resolution - 570 TV lines
- High sensitivity - 0.07 lx (F1.2, 50IRE)
- Compact and lightweight design
- Built-in tripod screw holes for easy installation
- Sync system: Internal/AC line lock
- Backlight Compensation: ON/OFF switchable (when CCD IRIS function is ON)
- AGC: TURBO (up to 24 dB)/OFF switchable
- Wide range CCD IRIS function (ON/OFF switchable, 1/60 to 1/100,000 s)
- CCD IRIS function allows for the use of low cost manual iris lenses
- Accepts video or DC auto iris lenses
- CS-mount
- Automatically selects AC 24 V or DC 12 V for proper operation



SSC-M383 Rear

SSC-M183 (B/W)



- Ideal for low light applications
- 1/3-type Super HAD CCD
- Horizontal resolution - 380 TV lines
- High sensitivity - 0.07 lx (F1.2, 50IRE)
- Compact and lightweight design
- Built-in tripod screw holes for easy installation
- Sync system: Internal/AC line lock
- Backlight Compensation: ON/OFF switchable (when CCD IRIS function is ON)
- AGC: TURBO (up to 24 dB)/OFF switchable
- Wide range CCD IRIS function (ON/OFF switchable, 1/60 to 1/100,000 s)
- CCD IRIS function allows for the use of low cost iris lenses
- Accepts video or DC auto iris lenses
- CS-mount
- Automatically selects AC 24 V or DC 12 V for proper operation



SSC-M183 Rear

ANALOG CAMERAS

SSC-CD73V



- Built-in CS-mount auto iris vari-focal lens covers a wide range of viewing angles (f=3.0 to 8.0 mm)
- 1/4-type Super HAD CCD
- High sensitivity - Color: 0.9 lx, B/W: 0.2 lx (F1.0, 50IRE, AGC ON)
- Rugged design - IP66 rated
- Day/Night mode - automatically senses lighting changes and switches camera mode from color to B/W or via an external trigger
- BNC type analog composite video output
- Designed for easy mounting and installation
- AC Line Lock capability for AC operation
- Backlight Compensation: ON/OFF switchable
- AGC: TURBO (up to 24 dB)/OFF switchable
- Wide range Auto Tracing White balance (ATW)
- CS-mount
- Dual power capability - automatically selects AC 24 V or DC 12 V for proper operation

SSC-CD43V



- Built-in CS-mount auto iris vari-focal lens covers a wide range of viewing angles (f=3.0 to 8.0 mm)
- 1/4-type Super HAD CCD
- High sensitivity - 0.8 lx (F1.0, 50IRE, AGC ON)
- BNC type analog composite video output
- Designed for easy mounting and installation
- AC Line Lock capability for AC operation
- Backlight Compensation: ON/OFF switchable
- AGC: TURBO (up to 24 dB)/OFF switchable
- Wide range Auto Tracing White balance (ATW)
- CS-mount
- Dual power capability - automatically selects AC 24 V or DC 12 V for proper operation

CAMERA ADAPTORS

YS-W270A



- Camera adaptor for Color video camera (YS W270A is for the SSC-DC590/DC80)
- Provides DC power and video/sync signal between the adaptor and multiple cameras over a single coaxial cable
- Up to four cameras can be connected
- Internal or external synchronization with MPX-VS or MPX-VD
- Maximum cable length: 600 m with RG-11A/U (7C-2V) coaxial cable



YS-W270A Rear

YS-W170A



- Camera adaptor for Color video camera. (YS-W170A is for the SSC-DC590/DC80)
- Provides DC power and video/sync signal between a single adaptor and the camera over a coaxial cable
- Internal or external synchronization with MPX-VS or MPX-VD
- Maximum cable length: 600 m with RG-11A/U (7C-2V) coaxial cable



YS-W170A Rear

CAMERAS

UNIPAK™ UNITIZED CAMERA PACKAGES

Unitized Camera/Lens/Environmental Housing Packages

UNI-PM183 AND UNI-PM383 SERIES **Black & White Indoor and Outdoor Models**



- UNI-PM183 Series with SSC-M183 Super HAD CCD B&W Camera
- UNI-PM383 Series with SSC-M383 High Resolution Exwave HAD CCD B&W Camera
- Lens Options: Back Focused Vari-Focal Lens for both Indoor and Outdoor Models:
 - 2.8 to 12 mm F1.4 DC auto iris lens
 - 5 to 50 mm F1.4 DC auto iris lens
 - 3.5 to 8 mm F1.4 DC manual iris lens
- Housing:
 - Extruded aluminum housing
 - Tamper resistant camera housing lock down screws provided
 - High strength steel wall mount bracket included
 - Outdoor models include AC 24V heater and blower

(See page 34 for complete model list.)

UNI-PC593 SERIES **Wide Dynamic, Day/Night Color Indoor and Outdoor Models**



- UNI-PC593A13 with SSC-DC593 IT DynaView CCD Day/Night Camera without heater and blower
- UNI-PC593A13HB with SSC-DC593 IT DynaView CCD Day/Night Camera with heater and blower
- Lens Options: Fujinon IR compensated, Day/Night Vari-Focal Lens
 - 2.7 to 13.5 mm
 - 5 to 50 mm
- Housing:
 - Extruded aluminum housing
 - Tamper resistant camera housing lock down screws provided
 - High strength steel wall mount bracket included
 - Outdoor models include AC 24V heater and blower

(See page 34 for complete model list.)

UNI-PC453 AND UNI-PC473 SERIES **Color Indoor and Outdoor Models**



- UNI-PC453 Series with Super Exwave HAD CCD Color Camera
- UNI-PC473 Series with Super Exwave HAD CCD Color Camera
- Lens Options:
 - 2.8 to 12 mm (not available for UNI-PC473)
 - 5 to 50 mm
- Housing:
 - Extruded aluminum housing
 - Tamper resistant camera housing lock down screws provided
 - High strength steel wall mount bracket included
 - Outdoor models include AC 24V heater and blower

(See page 34 for complete model list.)

CAMERA HOUSINGS

OUTDOOR HOUSINGS

Pressurized, Outdoor Pendant Mount Housings for use with Sony's SNC-RZ30N Network Camera



- SNC-PFD8C2/SY - 8" Outdoor, pressurized, pendant mount, clear dome housing with AC 24 V input plus Ethernet, interface wiring and heater/blower
- SNC-ODP8T2 - 8" Outdoor, pressurized, pendant mount, tinted dome housing with AC 24 V input plus Ethernet, interface wiring and heater/blower
- High Impact, UV protected, engineered plastic housing with UL flame rating of 94VO
- Thermoformed, optically clear or tinted, cell-cast acrylic dome
- Input power - 75 watts at AC 24V (including camera)
- International Protection Code Rating - IP67

Non-Pressurized, Outdoor Pendant Mount Housings for use with Sony's SNC-RZ30N Network Camera



- SNC-FDP8C2/SY - 8" Outdoor, non-pressurized, pendant mount, clear dome housing with AC 24 V input plus Ethernet, interface wiring and heater/blower
- SNC-OD8T2 - 8" Outdoor, non-pressurized, pendant mount, tinted dome housing with AC 24 V input plus Ethernet, interface wiring and heater/blower
- High Impact, UV protected, engineered plastic housing with UL flame rating of 94VO
- Thermoformed, optically clear or tinted, cell-cast acrylic dome
- Input power - 50 watts at AC 24V (including camera)
- International Protection Code Rating - IP66

Pressurized, Outdoor Pendant Mount Housing for use with Sony's SNC-RZ25N Network Camera



- UNI-SNCODP8C2-8" Outdoor, pressurized, pendant mount, clear dome housing with AC 24V input plus Ethernet, interface wiring and heater/blower
- Housing:
 - High Impact, UV protected, engineered plastic housing with UL flame rating of 94VO
- Thermoformed, optically clear or tinted, cell-cast acrylic dome
- Input Power – 50 watts at AC 24V
- International Protection Code Rating – IP67

Non-Pressurized, Outdoor Pendant Mount Housing for use with Sony's SNC-RZ25N Network Camera



- UNI-SNCOD8C2-8" Outdoor, pressurized, pendant mount, clear dome housing with AC 24V input plus Ethernet, interface wiring and heater/blower
- UNI-SNCRD7C2-7" Outdoor, pressurized, pendant mount, clear dome housing with AC 24V input plus Ethernet, interface wiring and heater/blower
- Housing:
 - High Impact, UV protected, engineered plastic housing with UL flame rating of 94VO
- Thermoformed, optically clear or tinted, cell-cast acrylic dome
- Input Power – 50 watts at AC 24V
- International Protection Code Rating – IP66

CAMERA HOUSINGS

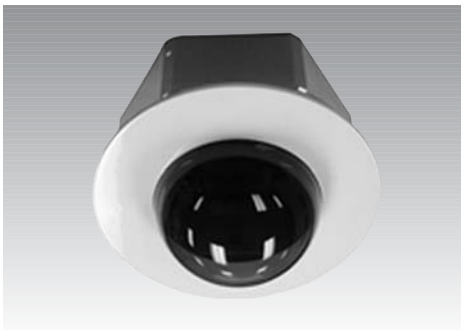
Environmental, Outdoor Housing for use with the SNC-Z20N and SNC-CS3N Network Cameras



- SNC-UNIHB/1 – Outdoor wall mount housing with heater and blower
- Housing:
 - Extruded aluminum housing
 - Tamper resistant camera housing lock down screws provided
 - High strength steel wall mount bracket included
 - Outdoor models include AC 24V heater and blower

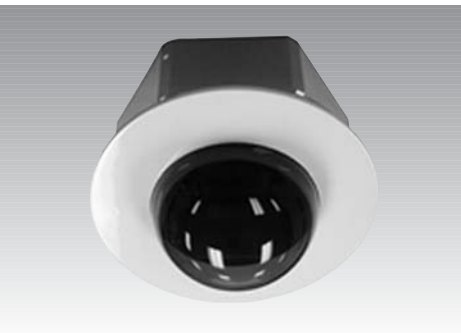
INDOOR HOUSINGS

Non-Pressurized, Indoor Pendant or Ceiling Mount Housings for use with the SNC-RZ30N Network Camera



- SNC-ID8C2 – 8" Indoor, pendant mount, clear dome housing with AC 24V , Ethernet and interface wiring
- SNC-ID8T2 – 8" Indoor, pendant mount, tinted dome housing with AC 24V , Ethernet and interface wiring
- SNC-ID8C1 – 8" Indoor, pendant mount, clear dome housing without any electrical power or wiring
- SNC-ID8C2 – 8" Indoor, pendant mount, tinted dome housing without any electrical power or wiring
- SNC-ID7C1 – 7" Indoor, ceiling mount, clear dome housing without any electrical power or wiring
- SNC-ID7T1 – 7" Indoor, ceiling mount, tinted dome housing without any electrical power or wiring
- High Impact, UV protected, engineered plastic housing with UL flame rating of 94VO
- Thermoformed, optically clear or tinted, cell-cast acrylic dome
- Input Power – 24 watts at AC 24V (including camera) for SNC-ID8C2 and SNC-ID8T2 only

Non-Pressurized, Indoor Pendant or Ceiling Mount Housing for use with the SNC-RZ25N Network Cameras



- UNI-SNCID8C2-8" – Indoor dome housing, pendant mount with clear dome
- UNI-SNCRD7C1-7" – Indoor vandal resistant dome housing, pendant mount with clear dome
- High Impact, UV protected, engineered plastic housing with UL flame rating of 94VO
- Thermoformed, optically clear or tinted, cell-cast acrylic dome

Non-Pressurized, Indoor Housing for use with the SNC-Z20N and SNC-CS3N Network Cameras

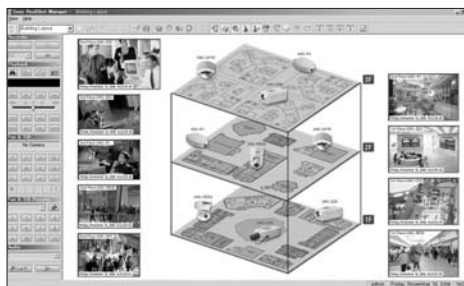


- SNC-UNI – Indoor wall mount housing without heater/blower
- Housing:
 - Extruded aluminum housing
 - Tamper resistant camera housing lock down screws provided
 - High strength steel wall mount bracket included

SYSTEMS AND SOFTWARE

Intelligent Monitoring Software

IMZ-RS300 Series (IMZ-RS301/RS304/RS309/RS316/RS332/RS300C)



- Remote control, monitoring, and recording of up to 32 video cameras
 - IMZ-RS301: Control PC software license for 1 network video source
 - IMZ-RS304: Control PC software license for 4 network video sources
 - IMZ-RS309: Control PC software license for 9 network video sources
 - IMZ-RS316: Control PC software license for 16 network video sources
 - IMZ-RS332: Control PC software license for 32 network video sources
 - IMZ-RS300C: Software license for client PC when in client/server configuration
- Intelligent Motion Detection function
- Supports MPEG-4 network cameras
- Capable of recording, monitoring, and playing back G.711/G.726 audio
- "Layout Editor" for creating customized site layouts
- Monitoring from a Web browser¹²
- Definable "Action Areas" allows monitoring of specific cameras or areas
- Automatic layout "Tour" function
- "Hot Spot" monitoring and dual monitor support
- Supports a high frame rate of 30 fps at 640 x 480 pixels from network cameras such as the SNC-RZ30N
- Manual/Scheduled/Alarm/Pre-alarm recording capabilities
- Supports playback during recording
- Quick and easy search of recorded images by thumbnail using time codes, alarm events, and/or comments as the search key
- Activity and/or motion detection to trigger an alarm
- E-mail notification when an alarm is triggered
- Dynamic Masking function to mask unwanted or prohibited areas of an image
- Camera Pan/Tilt/Zoom control capability
- Camera preset positions can be assigned and these positions can be "toured"
- API (Application Programming Interface) for developers and integrators to customize systems
- AVI file export
- Compatible with disk and/or tape archive systems
- Time stamped comments for easy search of material
- User/Group privileges to limit access to specific functions
- Customized logging reports for troubleshooting

¹² Requires Web gateway software

VIDEO NETWORK STATION

SNT-V501

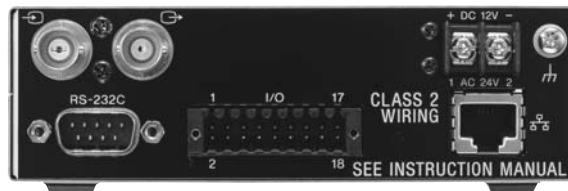


- Ideal for video monitoring over networks (converts analog camera signals to TCP/IP)
- Camera images can be remotely monitored and controlled over existing networks (LAN/WAN)
- Built-in web server provides user-friendly interface for easy monitoring and control from networked PCs running a Web browser
- Supports a high frame rate of up to 30 fps¹³ at a high-resolution of 704 x 480 (NTSC) to provide clear and smooth moving images
- Easy to install, expand, and maintain
- Multi-user access and password protection
- Video Out for local monitoring
- PC Card Slot¹⁴ to increase storage capacity with flash memory or to configure in a wireless network with an IEEE 802.11b-compliant wireless PC card
- RS-232C/485 Interface for camera control including Pan/Tilt/Zoom control
- Transparency function allows control of external equipment from a PC on the network
- Built-in activity detection function to trigger an alarm
- Alarm image buffering allows for storage of pre-alarm and post-alarm images
- When an alarm occurs, a JPEG file showing the alarm event can be sent to pre-determined e-mail addresses or to a server
- "Tour" feature for scanning pre-assigned patterns
- Viewing from a PDA¹⁵

¹³ In order to achieve the maximum frame rate, a client PC with adequate processing power and an adequate network environment are required.

¹⁴ Please contact your local Sony office or authorized dealer for information on memory and wireless cards compatible with the SNT-V501.

¹⁵ Compatible with PDAs running Microsoft Pocket PC® system . Requires the Jeode plug-in Ver. 1.9.1.



SNT-V501 Rear Panel

SNT-V704



- Ideal for video monitoring over networks (converts analog camera signals to TCP/IP)
- Camera images can be remotely monitored and controlled over existing networks (LAN/WAN)
- Built-in web server provides user-friendly interface for easy monitoring and control from networked PCs running a Web browser
- MPEG4/JPEG compression
- Supports a high frame rate of up to 30 fps at a high-resolution of 720 x 480 (NTSC) to provide clear and smooth moving images
- Bidirectional audio
- Easy to install, expand, and maintain
- Multi-user access and password protection
- Video Out for local monitoring
- USB port for external storage
- Built-in activity detection function to trigger an alarm -Camera PTZ control and setting with a serial interface(Sony, Pelco, Bosch)
- "Tour" feature for scanning pre-assigned patterns
- Dynamic masking function

IPELA

IPELA is Sony's vision of the ultimate workplace, designed to revolutionize the way business communicates over global IP networks. Utilizing Sony's line of high quality, IP-ready videoconferencing and monitoring products, communication is delivered in high-resolution images and naturally clear audio – with a quality never before achieved.



SNT-V704 Rear Panel

DIGITAL HARD DISK RECORDER

HSR-X206



- 6-channel digital hard disk recorder with built-in multiplexer
- Large capacity 320 GB HDD (160 GB x 2, ATA/ATAPI-5 standard)
- Long recording time of 2686 hours (112 days) when in high mode (1-channel input, 1 picture/s)
- High-resolution (720 x 240) NTSC in field recording mode and high picture quality recording and playback
- Motion-JPEG compression
- Network capability (built-in 100Base-TX Ethernet interface)
- Real-time live video monitoring from all six cameras, each at a frame rate of 30 fps
- Easy settings from the single-page setup menu
- Playback during recording
- Alarm recording, timer recording, programmed recording, and activity detection function
- Audio single-channel recording and playback
- Intelligent search function allows five types of searches
- Three data storage areas on HDD (normal recording, alarm recording, and archive area)
- Built-in Compact Flash (CF) card slot to copy images on removable media, such as a CF card or Memory Stick Duo™ using a CF card adapter
- Variable-speed picture search
- Auto delete function
- 2x digital zoom
- Video loss alarm
- Two security lock levels (User/Administer levels)
- HDD mirroring function
- 30-day backup on settings if power fails



HSR-X206 Rear Panel

MONITORS

LMD-1410SC



- 14-inch¹⁶ LCD monitor
- Panel Resolution: 640 x 480 (VGA)
- Accepts NTSC and PAL
- Accepts Composite, Y/C, Component, and RGB signals
- -3% underscan and +5% overscan
- Switchable aspect ratio (4:3 and 16:9)
- On-Screen menu for adjustment/operation
- Parallel Remote Control
- Color Temperature Adjustment
- VESA mounting with 100 mm spacings
- 19-inch EIA standard rack mountable
- Monitor stand supplied
- Built-in speaker for audio monitoring
- AC 100 to 240 V, 50/60Hz

¹⁶ 13.94-inch viewable area measured diagonally



LMD-1410 Rear

LMD-2010SC



- 20-inch¹⁷ LCD monitor
- Panel Resolution: 640 x 480 (VGA)
- Accepts NTSC and PAL
- Accepts Composite, Y/C, Component, and RGB signals
- -3% underscan and +5% overscan
- Switchable aspect ratio (4:3 and 16:9)
- On-Screen menu for adjustment/operation
- Parallel Remote Control
- Color Temperature Adjustment
- VESA mounting with 100 mm spacings
- 19-inch EIA standard rack mountable
- Monitor stand supplied
- Built-in speaker for audio monitoring
- AC 100 to 240 V, 50/60Hz

¹⁷ 20.1-inch viewable area measured diagonally



LMD-2010 Rear

(Note: LMD-2010SC available in February 2006)

SPECIFICATIONS

Network Cameras

| | SNC-RX550N | SNC-CS50N |
|-----------------------------|---|---|
| Camera type | 360PTZ | Fixed |
| Camera Specs | | |
| Image device | 1/4 type Exwave HAD CCD | Super Exwave CCD |
| Effective pixel | 380,000 | 380,000 |
| Lens type | Auto-focus x26 optical zoom lens | CS-mount x2.7 Van-focal auto iris lens |
| Pan Angle | 360 degree endless | N/A |
| Tilt Angle | 0 to 90 degrees | N/A |
| Day/Night functions | Yes | Yes |
| Activity detection | Yes | Yes |
| Wireless | Yes *with CF adapter and optional accessory SNCA-CFW1 | Yes *with CF adapter and optional accessory SNCA-CFW1 |
| Minimum Illumination | 1lx (color) / 0.15 lx (B/W) (F1.6, AGC ON, 50IRE) | 0.4lx (color) / 0.35 lx (B/W) (F1.0, AGC ON, 50IRE) |
| Composite Video Output | BNC x 1, 1.0 Bp-p, 75Ω unbalanced, sync negative | BNC x 1, 1.0 Bp-p, 75Ω unbalanced, sync negative |
| Horizontal resolution | 470 TVL | 540 TVL |
| S/N ratio | more than 50 dB | More than 50 dB |
| Image size | VGA, QVGA, QQVGA | VGA, QVGA, QQVGA |
| Compression | Multi code capability (JPEG/MPEG4/H.264) | Multi code capability (JPEG/MPEG4/H.264) |
| Maximum frame rate | 30fps JPEG/MPEG4, 10fps H.264 at VGA | 30fps JPEG/MPEG4, 10fps H.264 at VGA |
| Audio | G.726, G.711 | JG.726, G.711 |
| Ethernet | 10Base-T/100Base-TX (RJ-45) | 10Base-T/100Base-TX (RJ-45) |
| Serial interface | RS-232C | RS-232C |
| Sensor output | Sensor input x 2 | Sensor input x 2 |
| Alarm output | Alarm output x2 | Alarm output x2 |
| Card slot | PC card type II x 1, Memory Stick Slot x 1 | PC card type II x 1 |
| General | | |
| Weight | 5 lbs. | 1 lb. 12 oz. |
| Dimensions (W x H x D) | 6.5 x 6.5 x 9.1 inches | 3.3 x 2.7 x 6.2 inches (without lens and cover) |
| Power requirements | AC24V, DC12V | AC24V, DC12V PoE |
| Power consumption | 25 W | 9 W |
| Supplied accessories | Ceiling bracket (A), Ceiling bracket (B), Wire rope, Tapping screws (M3x8), CD-ROM (User's guide, setup program), installation manual Rubber foot, Clamp filter, CD-ROM (User's guide, setup program), Installation manual | CD-ROM (setup program user's guide), Wire rope, Shoulder screw M4, Cable cover, Front cover, Lens cable cover, Front cover screw, installation manual |

SPECIFICATIONS

Network Cameras

| | SNC-RZ30N/2 | SNC-RZ25N |
|------------------------------------|---|--|
| Image device | 1/6-type Super HAD CCD | 1/4-type CCD with Exwave HAD Technology |
| Number of effective pixels (H x V) | 630,000 (962 x 654) | 380,000 (768 x 494) |
| Electronic shutter | Auto/Manual | |
| Gain control | Auto/Manual | |
| Exposure control | Auto/Shutter-priority/Iris-priority/Manual/Backlight compensation | |
| White balance mode | Auto/Indoor/Outdoor/One push auto/ATW/Manual | |
| Lens type | Auto-focus zoom lens | |
| Zoom ratio | 25x Optical (12x Digital) | 18x Optical (12x Digital) |
| Horizontal viewing angle | 45 to 2.0 degrees | 48 to 2.7 degrees |
| Focal length | f=2.4 to 60 mm | f=4.1 to 73.8 mm |
| F number | F1.6 (Wide), F2.7 (Tele) | F1.4 (Wide), F3.0 (Tele) |
| Pan angle | -170 to +170 degrees | |
| Tilt angle | -90 to +25 degrees | -90 to +30 degrees |
| Other functions | Day/Night, Image Flip, Activity Detection, Image stabilizer | Day/Night, Image Flip, Motion Detection |
| Image | | |
| Image size | | |
| JPEG | 736 x 480, 640 x 480, 320 x 240, 160 x 120 | 640 x 480, 480 x 360, 384 x 288, 320 x 240, 256 x 192, 160 x 120 |
| MPEG-4 | – | 640 x 480, 480 x 360, 384 x 288, 320 x 240, 256 x 192, 160 x 120 |
| Compression format | JPEG | JPEG/MPEG-4 (Selectable) |
| Maximum frame rate | | |
| JPEG | 30 fps (640 x 480) | 30 fps (320 x 240) |
| MPEG-4 | – | 30 fps (320 x 240) |
| Audio | | |
| Compression format | – | G.726 (40, 32, 24, 16 kbps), G.711 (64 kbps) |
| Network | | |
| Protocols | TCP/IP, ARP, ICMP, DHCP, DNS, HTTP, FTP, SMTP, NTP, SNMP(MIB2) | TCP/IP, UDP, ARP, ICMP, DHCP, DNS, HTTP, FTP, SMTP, NTP, SNMP(MIB2), RTP/RTCP, PPPoE |
| Number of clients | 50 | JPEG: 20, MPEG-4: 10 |
| Interface | | |
| Ethernet | 100Base-TX/10Base-T (RJ-45) | |
| Serial interface | RS-485/RS-232C | RS-232C |
| Card slot | PC card Type II x 2 | Compact Flash type x 1 |
| Analog video output | BNC x 1, 1.0 Vp-p, 75 Ω unbalanced, sync negative | |
| I/O port | Sensor in x 3, Alarm out x 2 | Sensor input x 2, Alarm output x 2 |
| External microphone input | – | Mini-jack (monaural), 4.7 kΩ, 2.5 V plug-in power |
| Audio line output | – | Mini-jack (monaural), max output level: 1Vrms |
| Analog video output | | |
| Signal system | NTSC | |
| Horizontal resolution | 480 TV lines | |
| S/N ratio | more than 48 dB | More than 50 dB |
| Minimum illumination | Color: 2.5 lx (AGC ON, F1.6, 50IRE) B/W: 0.1 lx (AGC ON, F1.6, 50IRE) | Color: 0.7 lx (AGC ON, F1.4, 50IRE) B/W: 0.06 lx (AGC ON, F1.4, 50IRE) |
| General | | |
| Weight | approx. 2 lb 10 oz (1,200 g) | approx. 2 lb 14 oz (1,300 g) |
| Dimensions (W x H x D) | 5 5/8 x 7 x 5 3/4 inches (140 x 175 x 144 mm) without projection | 5 5/8 x 7 7/8 x 5 7/8 inches (140 x 200 x 148 mm) without projection |
| Power requirements | DC 12 V | AC 24 V (50/60Hz), DC 12 V |
| Power consumption | 21.6 W max. | 18 W max |
| Operating temperature | 32 to 104°F (0 to 40°C) | |
| Storage temperature | -4 to 140°F (-20 to 60°C) | |
| Supplied accessories | | |
| | AC power adaptor, AC power cord, Ceiling bracket (A), Ceiling bracket (B), Wire rope, Fixing screws (+PSW 3x6), Shoulder screw M4, I/O receptacle, Rubber foot, Clamp filter, CD-ROM (User's guide, setup program), Installation manual | Ceiling Bracket (A), Ceiling Bracket (B), Wire rope, Tapping screw (M3x6), CD-ROM (User's guide, supplied programs), Installation manual |
| System requirements | | |
| Operating system | Windows® 98/98SE/Me/NT4.0/2000/XP | Windows 2000/XP |
| Processor | CPU: Pentium III® 500 MHz or higher (Pentium® IV, 1GHz or higher recommended) | CPU: Pentium III 1 GHz or higher (Pentium IV, 2 GHz or higher recommended) |
| Memory | RAM: 128 MB or more | RAM: 256 MB or more |
| Web browser | Microsoft Internet Explorer version 5.5 or 6.0 | |

SPECIFICATIONS

Network Cameras

| | SNC-Z20N | SNC-CS3N |
|------------------------------------|---|---|
| Camera | | |
| Image device | 1/4-type CCD with Exwave HAD technology | 1/3-type CCD with Exwave HAD technology |
| Number of effective pixels (H x V) | 380,000 (768 x 494) | 380,000 (768 x 494) |
| Electronic shutter | Auto/Manual | |
| Gain control | Auto/Manual | |
| Exposure control | Auto/Shutter-priority/Iris-priority/Manual/Backlight compensation | – |
| White balance mode | Auto/ATW/Indoor/Outdoor/One push/Manual | ATW |
| Lens type | Auto-focus zoom lens | Vari-focal auto iris lens |
| Zoom ratio | 18x Optical (12x Digital) | 2.7x Optical |
| Horizontal viewing angle | 48 to 2.7 degrees | 91 to 36 degrees |
| Focal length | f=4.1 to 73.8 mm | f=3.0 to 8.0 mm |
| F number | F1.4 (Wide), F3.0 (Tele) | F1.0 (Wide), F1.4 (Tele) |
| Other functions | Day/Night, Image Flip, Activity Detection | Activity Detection |
| Image | | |
| Image size | | |
| JPEG | 736 x 480, 640 x 480, 320 x 240, 160 x 120 | 736 x 480, 640 x 480, 320 x 240, 160 x 120 |
| Compression format | JPEG | |
| Maximum frame rate | | |
| JPEG | 30 fps (640 x 480) | 30 fps (640 x 480) |
| Network | | |
| Protocols | TCP/IP, ARP, ICMP, DHCP, NTP, DNS, HTTP, FTP, SMTP, SNMP (MIB2) | |
| Number of clients | 50 | |
| Interface | | |
| Ethernet | 100Base-TX/10Base-T (RJ-45) | |
| Serial interface | RS-232C | |
| Card slot | PC card Type II x 1 | |
| Analog video output | BNC x 1, 1.0 Vp-p, 75 Ω, unbalanced, sync negative | |
| I/O port | Sensor in x 1, Alarm out x 2 | |
| Analog video output | | |
| Signal system | NTSC | |
| Horizontal resolution | 480 TV lines | |
| S/N ratio | More than 50 dB (AGC OFF, Weight ON) | |
| Minimum illumination | Color: 0.7 lx (AGC ON, F1.4, 50IRE) B/W: 0.06 lx (AGC ON, F1.4, 50IRE) | 0.5 lx (AGC ON, F1.0, 50IRE) |
| General | | |
| Weight | approx. 1 lb 12 oz (800 g) | approx. 1 lb 7 oz (650 g) |
| Dimensions (W x H x D) | 3 1/4 x 3 1/8 x 7 inches (80 x 77 x 177 mm) | 2 7/8 x 2 1/4 x 7 7/8 inches (70 x 57 x 199 mm) |
| Power requirements | AC 24 V (50/60 Hz), DC 12 V, Power Over Ethernet | |
| Power consumption | 9 W max | 8 W |
| Operating temperature | 32 to 104°F (0 to 40°C) | 14 to 122°F (-10 to 50°C) |
| Storage temperature | -4 to 140°F (-20 to 60°C) | |
| Supplied accessories | | |
| | CD-ROM (setup program, user's guide), Wire rope, Shoulder screw M4, Installation manual | |
| System requirements | | |
| Operating system | Microsoft Windows 98/98SE/ME/NT4.0/2000/XP | |
| Processor | Intel Pentium III, 500 MHz or higher (Intel Pentium IV, 1 GHz or higher recommended) | |
| Memory | RAM: 128 MB or more | |
| Web browser | Microsoft Internet Explorer version 5.5 or 6.0 | |

SPECIFICATIONS

Network Cameras

| | SNC-DF70N | SNC-DF40N |
|------------------------------------|---|--|
| Camera | | |
| Image device | 1/4-type Super HAD CCD | |
| Number of effective pixels (H x V) | 380,000 (768 x 494) | 380,000 (768 x 494) |
| Gain control | Auto/Manual | |
| Exposure control | Auto/Manual, Backlight compensation | |
| White balance mode | ATW | |
| Lens type | CS-mount 2.7x Vari-focal auto iris lens | |
| Horizontal viewing angle | 26.9 to 66.6 degrees | |
| Focal length | f=3.0 to 8.0 mm | |
| F number | F1.0 (Wide), F1.45 (Tele) | F1.0 (Wide), F1.4 (Tele) |
| Other functions | Day/Night, Motion Detection | Motion Detection |
| Image | | |
| Image size | | |
| JPEG | 640 x 480, 480 x 360, 384 x 288, 320 x 240, 256 x 192, 160 x 120 | |
| MPEG-4 | 640 x 480, 480 x 360, 384 x 288, 320 x 240, 256 x 192, 160 x 120 | |
| Compression format | MPEG-4/JPEG (Selectable) | |
| Maximum frame rate | | |
| JPEG | 30 fps (320 x 240) | |
| MPEG-4 | 30 fps (320 x 240) | |
| Audio | | |
| Compression format | G.711 (64 Kbps)/G.726 (40, 32, 24, 16 Kbps) | |
| Network | | |
| Protocols | TCP/IP, UDP, ARP, ICMP, DHCP, DNS, HTTP, FTP, SMTP, NTP, SNMP (MIB2), RTP/RTCP, PPPoE | |
| Number of clients | JPEG: 20, MPEG-4: 10 | |
| Interface | | |
| Ethernet | 100Base-TX/10Base-T (RJ-45) | |
| Analog video output | BNC, 1.0 Vp-p, 75 Ω, unbalanced, sync negative | |
| I/O port | Sensor input x 1, Alarm output x 2 | |
| External microphone input | Mini-jack (monaural), 4.7 kΩ, 2.5 V plug-in power | |
| Audio line output | Mini-jack (monaural), max output level: 1 Vrms | |
| Analog video output | | |
| Signal system | NTSC | |
| Horizontal resolution | 480 TV lines | |
| S/N ratio | more than 50 dB | |
| Minimum illumination | Color: 0.9 lx (AGC ON, F1.0, 50IRE), B/W: 0.2 lx (AGC ON, F1.0, 50IRE) | Color: 0.8 lx (F1.0, 50IRE, AGC ON) |
| General | | |
| Weight | approx. 3 lb 5 oz (1,500 g) | approx. 1 lb 10 oz (750 g) |
| Dimensions (W x H x D) | 6 1/2 x 5 3/8 x 6 5/8 inches (165 x 135 x 166 mm) without projection | 5 x 5 1/4 x 5 inches (124 x 132 x 126 mm) without projection |
| Power requirements | AC 24 V (50/60 Hz), DC 12 V, Power Over Ethernet | |
| Power consumption | 8.0 W | 7.5 W |
| Operating temperature | 14 to 122°F (-10 to +50°C) | |
| Storage temperature | -4 to +140°F (-20 to +60°C) | |
| Supplied accessories | | |
| | Monitor cable, Wire rope, Screws, Dome cover screw, CD-ROM (User's guide, supplied programs), Installation manual | Monitor cable, Screws, Wrench, I/O extension cable, Wire rope, CD-ROM (User's guide, supplied programs), Installation manual |
| System requirements | | |
| Operating system | Microsoft Windows 2000/XP | |
| Processor | CPU: Pentium III, 1 GHz or higher (Pentium IV, 2 GHz or higher recommended) | |
| Memory | RAM: 256 MB or more | |
| Web browser | Microsoft Internet Explorer version 5.5 or 6.0 | |

SPECIFICATIONS

Network Cameras

| | SNC-P5 | SNC-P1 |
|------------------------------------|---|---|
| Camera | | |
| Image device | 1/4 type progressive scan CCD | |
| Number of effective pixels (H x V) | 330,000 (659 x 494) | |
| Electronic shutter | Auto/Manual | |
| Gain control | Auto/Manual | |
| Exposure control | Auto/Shutter priority/ Manual | |
| White balance mode | ATW/Indoor/Outdoor/One push auto/Manual | |
| Lens type | Pan focus zoom lens | Fixed focal lens |
| Zoom ratio | 3x optical | — |
| Horizontal viewing angle | 55.8 to 20 degrees | 53.4 degrees, |
| Focal length | F2.8 (Wide), F3.9 (Tele) | f=3.8 mm |
| F number | f3.4 to 10.2 mm | F2.0 |
| Pan angle | -60 to +60 degrees | — |
| Tilt angle | -65 to +10 degrees | — |
| Other functions | Motion Detection | |
| Image | | |
| Image size | | |
| JPEG | 640 x 480, 320 x 240, 160 x 120 | |
| MPEG-4 | 640 x 480, 320 x 240, 160 x 120 | |
| Compression format | MPEG-4, JPEG (Selectable) | |
| Maximum frame rate | | |
| JPEG | 30 fps (320 x 240) | |
| MPEG-4 | 30 fps (320 x 240) | |
| Audio | | |
| Compression format | G.711(64KBps)/G.726 (40,32,24,16KBps) | |
| Built-in microphone | Electret condenser microphone (omni-directional) | |
| Network | | |
| Protocols | TCP/IP, UDP,ARP, ICMP, DHCP, DNS, HTTP, FTP, SMTP, NTP, SNMP(MIB2), RTP/RTCP, PPPoE | |
| Number of clients | JPEG: 20, MPEG-4: 10 | |
| Interface | | |
| Ethernet | 100Base-TX/10Base-T (RJ-45) | |
| Card slot | Compact Flash type x 1 | — |
| Analog video output | Mini Jack, 1.0 Vp-p, 75 Ω, Sync negative | |
| I/O port | Sensor input x 2, Alarm output x 1 | Sensor input x 1, Alarm output x 1 |
| External microphone input | Mini-jack(monaural), 2.2k ohm, 2.5V plug-in power | |
| Audio line output | Mini-jack (monaural), max output level: 1 Vrms | |
| Analog video output | | |
| Signal system | NTSC | |
| Horizontal resolution | 400 TV lines | |
| S/N ratio | more than 48 dB | |
| Minimum illumination | 3.5 lx (AGC ON, F2.8, 30IRE) | 1.2 lx (AGC ON, F2.0, 30IRE) |
| General | | |
| Weight | Camera: approx. 13 oz (380 g), Stand: approx. 13 oz (360 g) | Camera: approx. 8 oz (225 g), Stand: approx. 6 oz (180 g) |
| Dimensions (W x H x D) | Camera: 5 1/8 x 5 1/8 x 4 3/8 inches (130 x 130 x 110 mm) without projection Stand: 5 1/8 x 7 1/8 x 5 5/8 inches (130 x 178 x 142 mm) | Camera: 4 x 1 7/16 x 5 1/2 inches (100 x 36 x 139 mm) without projection Stand: 4 3/4 x 5 5/8 x 6 inches (120 x 142 x 150mm) |
| Power requirements | DC12 V | |
| Power consumption | 6.2 W max | 3.5 W |
| Operating temperature | 32 to 95°F (0 to +35°C) | |
| Storage temperature | -4 to +140°F (-20 to +60°C) | |
| Supplied accessories | | |
| | AC power adaptor, AC Power cord, Stand, Wall-mount bracket, Rubber foot, Drop-prevention strap, Tapping screws, CD-ROM (user's guide, supplied programs), Installation manual | AC power adaptor, AC power cord, Stand, Wall-mount bracket, Rubber foot, Drop-prevention strap, Tapping screws, CD-ROM (user's guide, supplied programs), Installation manual |
| System requirements | | |
| Operating system | Windows 2000/XP | |
| Processor | CPU: Pentium III 1 GHz or higher (Pentium IV, 2GHz or higher recommended) | |
| Memory | RAM : 256 MB or more | |
| Web browser | Internet Explorer version 5.5 or 6.0 | |

SPECIFICATIONS

Network Cameras

| | SNC-M3 | SNC-M3W | SNC-M1 | SNC-M1W |
|------------------------------------|---|---|--|---|
| Camera | | | | |
| Image device | 1/4-type CMOS | | | |
| Number of effective pixels (H x V) | 310,000 (652 x 482) | | | |
| Electronic shutter | Auto | | | |
| Gain control | Auto | | | |
| Exposure control | Auto | | | |
| White balance mode | ATW | | | |
| Lens type | Fixed focal lens | | | |
| Zoom ratio | - | | | |
| Horizontal viewing angle | 51.0 degrees | | | |
| Focal length | f=3.7 mm | | | |
| F number | F2.0 | | | |
| Pan angle | +60 to -60 degrees | | - | |
| Tilt angle | +10 to -60 degrees | | - | |
| Minimum illumination | 4.5 lx (AGC ON, F2.0, 30IRE) | | | |
| Other functions | Motion Detection | | | |
| Image | | | | |
| Image size | | | | |
| JPEG | 640 x 480, 320 x 240, 160 x 120 | | | |
| MPEG-4 | 640 x 480, 320 x 240, 160 x 120 | | | |
| Compression format | MPEG-4/JPEG (Selectable) | | | |
| Maximum frame rate | | | | |
| JPEG | 30 fps (320 x 240) | | | |
| MPEG-4 | 30 fps (320 x 240) | | | |
| Audio | | | | |
| Compression format | G.726 (40, 32, 24, 16 Kbps) | | | |
| Built-in microphone | Electret condenser microphone (Omni-directional) | | | |
| Network | | | | |
| Protocols | TCP/IP, ARP, ICMP, DHCP, DNS, HTTP, FTP, SMTP, NTP | | | |
| Number of clients | 10 | | | |
| Wireless LAN | | | | |
| Standard | - | IEEE802.11b (2.4 GHz) | - | IEEE802.11b (2.4 GHz) |
| Transmission speed | - | 11 Mbps/5.5 Mbps/2 Mbps/1 Mbps (Auto Switch) | - | 11 Mbps/5.5 Mbps/2 Mbps/1 Mbps (Auto Switch) |
| Security | - | WEP (64/128 bits) | - | WEP (64/128 bits) |
| Interface | | | | |
| Ethernet | 100Base-TX/10Base-T (RJ-45) | | | |
| External microphone input | Mini-jack (monoral), 2.2 kΩ, 2.5 V plug-in power | | | |
| Audio line output | Mini-jack (monaural), Max output level: 1 Vrms | | | |
| General | | | | |
| Weight | Camera: approx. 12 oz (350 g) Stand: approx. 3 oz (80 g) | Camera: approx. 13 oz (380 g) Stand: approx. 3 oz (80 g) | Camera: approx. 9 oz (250 g) Stand: approx. 3 oz (80 g) | Camera: approx. 10 oz (280 g) Stand: approx. 3 oz (80 g) |
| Dimensions (W x H x D) | Camera: 4 3/8 x 4 1/8 inches (WxD) (8.2 W 110 x 104 mm) without projection Stand: 4 1/8 x 3 3/4 x 5 5/8 inches (102 x 94 x 142 mm) | | Camera: 4 3/8 x 2 3/4 inches (DxH) (110 x 69 mm) without projection Stand: 4 1/8 x 3 3/4 x 5 5/8 inches (102 x 94 x 142 mm) | |
| Power requirements | DC 5 V | | | |
| Power consumption | 5.5 W | 8.2 W | 2.9 W | 5.2 W |
| Operating temperature | 32 to 104°F (0 to +40°C) | | | |
| Storage temperature | -4 to +140°F (-20 to +60°C) | | | |
| Supplied accessories | | | | |
| | AC power adaptor, AC power cord, Stand, Rubber foot, Drop-prevention strap, Tapping screws (4x20), CD-ROM (user's guide, supplied programs), Installation manual * For M3/M3W only: Wall-mount holder, Wall-mount bracket, +PSW screws (3x8) | | | |
| System requirements | | | | |
| Operating system | Microsoft Windows 2000/XP | | | |
| Processor | CPU: Pentium III, 1 GHz or higher (Pentium IV, 2 GHz or higher recommended) | | | |
| Memory | RAM : 256 MB or more | | | |
| Web browser | Microsoft Internet Explorer version 5.5 or 6.0 | | | |

SPECIFICATIONS

Analog Cameras

| | SSC-E473 | SSC-E453 |
|------------------------------------|---|---|
| Camera | | |
| Image device | 1/3-type CCD with SuperExwave technology | 1/3-type CCD with SuperExwave technology |
| Number of effective pixels (H x V) | 370,000 (768 x 494) | |
| Auto Gain Control | TURBO/OFF switchable | |
| White balance mode | ATW pro/ATW | |
| Lens type | CS-mount, DC servo auto iris | |
| CCD iris | ON/OFF switchable, 1/60 to 1/100,000 s | ON/OFF switchable, 1/50 1/60 to 1/100,000 s |
| Back-Light Compensation (BLC) | ON/OFF switchable | |
| Day/Night function | Auto/External | - |
| Analog video output | BNC x 1, 1.0 Vp-p, 75 Ω, Sync negative | |
| Signal system | NTSC | |
| Sync system | Internal/AC Line lock | |
| Horizontal resolution | 540 TV lines | |
| S/N ratio | More than 50 dB (AGC OFF, WEIGHT ON) | |
| Minimum illumination | Color: 0.55 lx (50IRE, F1.2, Turbo AGC ON), B&W: 0.05 lx (50IRE, F1.2, Turbo AGC ON) | 0.55 lx (50IRE, F1.2, AGC ON, Turbo mode) |
| General | | |
| Weight | approx. 13 oz (380 g), approx. 1 lb 1 oz (460 g)* including front and rear covers | approx. 12 oz (360 g), approx. 15 oz (440 g)* including front and rear covers |
| Dimensions (W x H x D) | 2 3/8 x 2 1/8 x 5 inches (60 x 53 x 124 mm), 2 3/8 x 2 1/8 x 9 3/4 inches (60 x 53 x 246 mm)* including front and rear covers | 2 3/8 x 2 1/8 x 4 3/4 inches (60 x 53 x 118 mm), 2 3/8 x 2 1/8 x 9 1/2 inches (60 x 53 x 240 mm)* including front and rear covers |
| Power requirements | AC 24 V ±10%, 60 Hz or DC 12 V ±10% | AC 24 V ±10%, 60 Hz or DC 12 V ±10% |
| Power consumption | 4.0 W | 3.5 W |
| Operating temperature | 14 to 122°F (-10 to 50°C) | |
| Storage temperature | -40 to 140°F (-40 to 60°C) | |
| Supplied accessories | | |
| | Lens mount cap, Operating instructions, Front cover, Rear cover, Screws (2) | |

| | SSC-DC80 | SSC-DC83 |
|------------------------------------|--|---------------------------------------|
| Camera | | |
| Image device | 1/2-type CCD with Exwave HAD technology | |
| Number of effective pixels (H x V) | 370,000 (768 x 494) | |
| Auto Gain Control | Turbo/Normal/Manual/Off | |
| White balance mode | ATW-pro/ATW/3200K/5600K/Manual | |
| Lens type | CS/C-mount (C-mount adaptor supplied), DC/Video servo auto iris | |
| CCD iris | ON/OFF switchable, 1/60 to 1/100.000 s | |
| Back-Light Compensation (BLC) | SPOT/WEIGHT/OFF switchable | |
| Analog video output | BNC x 1, 1.0 Vp-p, 75 Ω, Sync negative, S-Video x 1 | |
| Signal system | NTSC | |
| Sync system | Internal/VS/VD | Internal/AC Line lock/VS |
| Horizontal resolution | 480 TV lines | |
| S/N ratio | More than 57 dB (AGC OFF, WEIGHT ON) | |
| Minimum illumination | 0.4 lx (50IRE, F1.2, Turbo AGC ON) | |
| General | | |
| Weight | approx. 1.4 oz (560 g) | approx. 1.3 oz (550 g) |
| Dimensions (W x H x D) | 2 7/8 x 2 1/4 x 20 1/4 inches (70 x 57 x 260 mm) (including front and rear covers) | |
| Power requirements | Multiplexing with the YS-W170A/W270A, or DC 12 V ±10 % | AC 24 V ±10 %, 60 Hz or DC 12 V ±10 % |
| Power consumption | 4.6 W | 4.4 W |
| Operating temperature | 14 to 122°F (-10 to 50°C) | |
| Storage temperature | -40 to 140°F (-40 to 60°C) | |
| Supplied accessories | | |
| | Lens mount cap, Operating instructions, Front cover, Rear cover, Screws (2), C-mount adaptor | |

SPECIFICATIONS

Analog Cameras

| | SSC-DC590 | SSC-DC593 |
|------------------------------------|---|------------------------------------|
| Camera | | |
| Image device | 1/3-type CCD with DynaView technology | |
| Number of effective pixels (H x V) | 370,000 (768 x 494) | |
| Auto Gain Control | NORMAL/TURBO/MANUAL/OFF selectable | |
| White balance mode | ATW pro/ATW/3200K/5600K/MANUAL/DUAL WB selectable | |
| Lens type | CS-mount, DC/Video servo auto iris | |
| CCD iris | ON/OFF switchable, 1/60 to 1/100,000 s | |
| Back-Light Compensation (BLC) | DYNAVIEW/SPOT/WEIGHT/OFF selectable | |
| Day/Night function | Auto/External/Color/B&W selectable | |
| Analog video output | BNC x 1, 1.0 Vp-p, 75 Ω, Sync negative | |
| Signal system | NTSC | |
| Sync system | Internal/VS/VD | Internal/AC Line lock |
| Horizontal Resolution | 480 TV lines | |
| S/N ratio | More than 50 dB (AGC OFF, WEIGHT ON) | |
| Minimum illumination | Color: 0.8 lx (50IRE, F1.4, Turbo AGC ON), B&W: 0.07 lx (50IRE, F1.4, Turbo AGC ON) | |
| General | | |
| Weight | approx. 1 lb 2 oz (500 g) | |
| Dimensions (W x H x D) | 2 7/8 x 2 1/4 x 5 1/8 inches (70 x 57 x 129 mm) | |
| Power requirements | Multiplexing with the YS-W170A/W270A or DC 12 V ±10% | AC 24 V ±10%, 60 Hz or DC 12 V ±10 |
| Power consumption | 5.8 W | |
| Operating temperature | 14 to 122°F (-10 to 50°C) | |
| Storage temperature | -40 to 140°F (-40 to 60°C) | |
| Supplied accessories | | |
| | Lens mount cap, Operating instructions, Menu operations | |

Analog Color Cameras

| | SSC-DC374 | SSC-DC174 |
|------------------------------------|---|--|
| Camera | | |
| Image device | 1/3-type Super HAD CCD | |
| Number of effective pixels (H x V) | 370,000 (768 x 494) | 250,000 (510 x 492) |
| Auto Gain Control | TURBO/OFF switchable | |
| White balance mode | ATW | |
| Lens type | CS-mount, DC servo auto iris | |
| CCD iris | ON/OFF switchable, 1/60 to 1/100,000 s | |
| Back-Light Compensation (BLC) | ON/OFF switchable | |
| Analog video output | BNC x 1, 1.0 Vp-p, 75 Ω, Sync negative | |
| Signal system | NTSC | |
| Sync system | AC Line lock | |
| Horizontal resolution | 480 TV lines | Internal / AC Line lock |
| S/N ratio | More than 50 dB (AGC OFF, WEIGHT ON) | |
| Minimum illumination | 0.8 lx (50IRE, F1.2, Turbo AGC ON) | |
| General | | |
| Weight | approx. 13 oz (355 g) | approx. 12 oz (355 g) |
| Dimensions (W x H x D) | 2 3/8 x 2 1/4 x 4 3/4 inches (60 x 54 x 120 mm) | 2 3/8 x 2 1/4 x 4 3/4 inches (60 x 54 x 120 mm) |
| Power requirements | AC 24 V ±10%, 60 Hz | AC 24 V ±10%, 60 Hz |
| Power consumption | 3.6 W | 3.4 W |
| Operating temperature | 14 to 122°F (-10 to 50°C) | |
| Storage temperature | -40 to 140°F (-40 to 60°C) | |
| Supplied accessories | | |
| | Lens mount cap, Operating instructions | Lens mount cap, Operating instructions, AC power cable |

SPECIFICATIONS

Analog Cameras (B/W)

| | SSC-M383 | SSC-M183 |
|------------------------------------|---|-------------------------------------|
| Camera | | |
| Image device | 1/3-type CCD with Exwave HAD technology | |
| Number of effective pixels (H x V) | 370,000 (768 x 494) | 250,000 (510 x 492) |
| Auto Gain Control | TURBO/OFF switchable | |
| White balance mode | ATW | |
| Lens type | CS-mount, DC/Video servo auto iris | |
| CCD iris | ON/OFF switchable, 1/60 to 1/100,000 s | |
| Back-Light Compensation (BLC) | ON/OFF switchable | |
| Analog video output | BNC x 1, 1.0 Vp-p, 75 Ω , Sync negative | |
| Signal system | EIA | |
| Sync system | Internal/AC Line lock | |
| Horizontal Resolution | 570 TV lines | 380 TV lines |
| S/N ratio | More than 50 dB (AGC OFF, WEIGHT ON) | |
| Minimum illumination | 0.07 lx (50IRE, F1.2, Turbo AGC ON) | 0.07 lx (50IRE, F1.2, Turbo AGC ON) |
| General | | |
| Weight | approx. 13 oz (360 g) | |
| Dimensions (W x H x D) | 2 ³ / ₈ x 2 ¹ / ₄ x 4 ³ / ₄ inches (60 x 54 x 120 mm) | |
| Power requirements | AC 24 V \pm 10%, 60 Hz or DC 12 V \pm 10% | |
| Power consumption | 2.6 W | 2.5 W |
| Operating temperature | 14 to 122°F (-10 to 50°C) | |
| Storage temperature | -40 to 140°F (-40 to 60°C) | |
| Supplied accessories | | |
| | Lens mount cap, Operating instructions | |

Analog Cameras

| | SSC-CD73V | SSC-CD43V |
|------------------------------------|---|---|
| Camera | | |
| Image device | 1/4-type Super HAD CCD | |
| Number of effective pixels (H x V) | 370,000 (768 x 494) | |
| Auto Gain Control | TURBO/OFF switchable | |
| White balance mode | ATW | |
| Lens type | Vari-focal lens, CS-mount, DC servo auto iris | |
| Focal length | f=3.0 to 8.0 mm | |
| View angle | W=84.6°(D), 66.6°(H), 49.3°(V) T=33.8°(D), 27°(H), 20.2°(V) | W=84.7°(D), 66.6°(H), 49.3°(V) T=33.6°(D), 26.9°(H), 20.1°(V) |
| CCD iris | ON/OFF switchable, 1/60 to 1/100,000 s | |
| Minimum object distance | 0.2 m | |
| Back-Light Compensation (BLC) | ON/OFF switchable | |
| Analog video output | BNC x 1, 1.0 Vp-p, 75 Ω , Sync negative | BNC x 1, 1.0 Vp-p, 75 Ω , Sync negative |
| Signal system | NTSC | |
| Sync system | Internal/AC Line lock | |
| Horizontal Resolution | 480 TV lines | 480 TV lines |
| S/N ratio | More than 50 dB (AGC OFF, WEIGHT ON) | |
| Minimum illumination | Color: 0.9 lx (50IRE, F1.0, AGC ON), B&W: 0.2 lx (50IRE, F1.0, AGC ON) | Color: 0.8 lx (50IRE, F1.0, AGC ON) |
| General | | |
| Weight | approx. 2 lb 10 oz (1,150 g) | approx. 16 oz (440 g) |
| Dimensions (W x H x D) | 5 ⁷ / ₈ x 4 ³ / ₈ x 5 ⁷ / ₈ inches (147 x 111 x 148 mm) | 4 ⁷ / ₈ x 4 ¹ / ₄ x 4 ⁷ / ₈ inches (121 x 107 x 123 mm) |
| Power requirements | AC 24 V \pm 10%, 60 Hz or DC 12 V \pm 10% | |
| Power consumption | 3.6 W | 3.3 W |
| Operating temperature | -4 to 122°F (-20 to 50°C) | |
| Storage temperature | -40 to 140°F (-40 to 60°C) | |
| Supplied accessories | | |
| | Screw TP4 x 30 (4), Monitor cable, Screwdriver, External control terminal connector, Operating Instructions | Screw TP4 x 30 (2), Dome cover screw, Monitor cable, Operating Instructions |

SPECIFICATIONS

Camera Adaptors

| | YS-W270A | YS-W170A |
|------------------------|--|---|
| Video output | BNC(8), composite video | BNC(2), composite video |
| Signal system | NTSC | NTSC |
| Video input | Camera in, BNC(4) | Camera in, BNC(1) |
| External sync | VS or VD-W | |
| Internal sync | MPX-VS or MPX-VD-W | |
| Max. cable length | 300 m (984 ft) using RG-59B/U 500 m (1640 ft) using RG-6A/U 600 m (1968 ft) using RG-11A/U | |
| Cable compensation | 3 positions | |
| Power requirements | AC 120 V, 60 Hz | |
| Power consumption | 92 W | 27 W |
| Operating temperature | 14 to 122°F (-10 to 50°C) | |
| Weight | 8 lb 6 oz (3.8 kg) | 4 lb 3 oz (1.9 kg) |
| Dimensions (W x H x D) | 16 3/4 x 2 1/8 x 13 5/8 inches (424 x 52 x 345 mm) | 8 8/3 x 2 1/8 x 13 5/8 inches (212 x 52 x 345 mm) |

UNIPAK Camera Packages

| UNIPAK COMPONENT TABLE | | | | | | | | | | | | |
|------------------------|------------------------|------------------------|--------------------------|------------------------------|---------------------------------------|-----------------------------------|--|-------------------------------------|-------------------------------|--------------------------------------|---------------------------------------|--------------------------------------|
| MODEL NAME | B/W CAMERA SSC-M383 | B/W CAMERA SSC-M383 | COLOR CAMERA SSC-E453 | DAY/NIGHT CAMERA SSC-E473 | DAY/NIGHT/DYNVIEW CAMERA SSC-DC593 | LENS FOR A50 SERIES 13VG2550SQ | LENS FOR A13 SERIES YV5X.7R488-SA2L | LENS FOR A12 SERIES 13VG2812ASSQ | LENS FOR M8 SERIES C-70308 | LENS FOR DAY/NIGHT YV10x5R4A-SA2L | OUTDOOR HOUSING with Heater/Blower | INDOOR HOUSING with Heater/Blower |
| UNI-PM183A812 | • | | | | | | | • | | | | • |
| UNI-PM183A812HB | • | | | | | | | • | | | • | |
| UNI-PM183A50 | • | | | | | • | | | | | | • |
| UNI-PM183A50HB | • | | | | | • | | | | | • | |
| UNI-PM383A12 | | • | | | | | | • | | | | • |
| UNI-PM383A12HB | | • | | | | | | • | | | • | |
| UNI-PM383A50 | | • | | | | • | | | | | | • |
| UNI-PM383A50HB | | • | | | | • | | | | | • | |
| UNI-PM383M8 | | • | | | | | | | • | | | • |
| UNI-PM383M8HB | | • | | | | | | | • | | • | |
| UNI-PC453A12 | | | • | | | | | • | | | | • |
| UNI-PC453A12HB | | | • | | | | | • | | | • | |
| UNI-PC453A50 | | | • | | | • | | | | | | • |
| UNI-PC453A50HB | | | • | | | • | | | | | • | |
| UNI-PC473A50 | | | | • | | | | | | • | | • |
| UNI-PC473A50HB | | | | • | | | | | | • | • | |
| UNI-PC593A13 | | | | | • | | | • | | | | • |
| UNI-PC593A13HB | | | | | • | | | • | | | • | |
| UNI-PC593A50 | | | | | • | | | | | • | | • |
| UNI-PC593A50HB | | | | | • | | | | | • | • | |

For camera specifications, see individual model specification pages.

| LENS | A50 SERIES Auto Iris (5-50mm) | A50 SERIES IR Compensated Vari-Focal (5 – 50 mm) | A13 SERIES IR Compensated Vari-Focal (2.7 – 13.5 mm) | A12 SERIES Auto Iris (2.8-12mm) | M8 SERIES Manual Iris (3.5-8mm) |
|----------------------------|----------------------------------|--|--|------------------------------------|------------------------------------|
| Lens Mount | CS | CS | CS | CS | CS |
| Format | 1/3" | 1/3" | 1/3" | 1/3" | 1/3" |
| Focal Length | 5 – 50mm | 5 – 50 mm | 2.7 – 13.5 mm | 2.8 – 12mm | 3.5 – 8mm |
| Maximum Aperture | F1.4 | F1.6 | F1.3 | F1.4 | F1.4 |
| Iris Range | F1.4 to F185 | F1.6 to T360 | F1.3 to F360 | F1.4 to F360 | F1.4 to Close |
| Angle of View (Horizontal) | Wide – 53.4° Tele – 5.3° | Wide – 51.17° Tele – 5.3° | Wide – 99.7° Tele – 20.6° | Wide – 97.4° Tele – 24.1° | Wide – 79.8° Tele – 35.4° |
| Angle of View (Vertical) | Wide – 40.1° Tele – 4.1° | Wide – 37.36° Tele – 4.07 | Wide – 74.3° Tele – 15.5° | Wide – 72.5° Tele – 18.1° | Wide – 58.8° Tele – 26.6° |

| HOUSING | ALL UNIPAK MODELS | SUPPLIED ACCESSORIES |
|--------------------------|-------------------------------------|----------------------------------|
| Material | Extruded Aluminum | Cable Strain Relief Plugs (2) |
| Environmental Spec | Complies with IP65 Standards | Black Nylon Lock Nuts (2) |
| Endcaps | Lexan® Molded | Security Hex Screws (2) |
| Camera/Lens Access | Side Hinged Opening to Allow Access | Security Hex Tool (1) |
| Wall Mounted Bracket | High strength steel | Wall Mount Bracket (1) |
| | | Operating Instruction Manual (1) |
| OUTDOOR UNIPAK MODELS | | |
| Blower Power Consumption | 24V AC, input rectified, 1.4VA | |
| Heater Power Consumption | 24V AC, i1.04A; 25VA | |

SPECIFICATIONS

Video Network Station

| | SNT-V501 | SNT-V704 |
|-------------------------------|---|---|
| Analog Video Interface | | |
| Video input | Analog composite (BNC x 1), 1.0 Vp-p, 75 Ω , unbalanced, sync negative. Auto sensing for NTSC or PAL | |
| Video output | Through video output: Analog composite (BNC x 1), 1.0 Vp-p, 75 Ω , unbalanced, sync negative | Analog composite (BNC x 4), 1.0 Vp-p, 75 Ω , unbalanced, sync negative (loop-through) |
| Audio | | |
| Audio compression | | G.711 (64Kb/s) |
| Mic in | | Mini-jack (Monaural) Supports Plug-in power system (5.0 V DC) |
| Line out | | Mini-jack (Monaural x 2ch) Maximum output level 1.1 Vrms |
| Line in | | Mini-jack (Monaural x 2ch) Maximum output level 1.1 Vrms |
| System/Network | | |
| CPU | 32-bit RISC processor | 64-bit RISC processor |
| RAM | 32 MB (including 8 MB alarm buffer) | 128 MB (including 32 MB alarm buffer) |
| Flash memory | 8 MB | 32 MB |
| Image size | | |
| NTSC | 704 x 480, 640 x 480, 320 x 240, 160 x 120 | 720 x 480, 640 x 480, 320 x 240 |
| PAL | 704 x 544, 640 x 480, 320 x 240, 160 x 120 | 720 x 576, 640 x 480, 320 x 240 |
| Compression method | JPEG | JPEG/MPEG-4 |
| Compression ratio | Approx. 1/5 to 1/60 (10 steps)* | Variable in* |
| Frame rate | | |
| NTSC | Max. 30 fps (640 x 480) | Max. 30 fps x 4ch (640 x 480) |
| PAL | Max. 25 fps (640 x 480) | |
| Protocols | TCP/IP, ARP, ICMP, HTTP, FTP (client/server), SMTP, DHCP, DNS, NTP, SNMP (MIB-2) | |
| Number of clients | Maximum of 50 | |
| Interface | | |
| Ethernet | 100Base-TX/10Base-T (RJ-45) | |
| Sensor input | (1) 3.3 to 24 V DC device supported, photo coupler inputs electrically isolated from this unit | (4) 3.3 to 24 V device supported, photo coupler inputs electrically isolated from this unit |
| Alarm output | (2) 24 V DC or less, 1 A, mechanical relay outputs electrically isolated from the camera | (4) 24 V DC or less, 1A, mechanical relay outputs are electrically isolated from the unit |
| Serial interface | RS-485/RS-232C (for camera control or transparency function) | RS-232C/485/422 (for camera control) |
| USB Port | | USB 2.0 (for use with USB mass storage class devices only) |
| PC card slot | PC card Type II x 2 | |
| General | | |
| Weight | Approx. 1 lb 7 oz (650 g) | Approx. 2 lb 10 oz (1.2 kg) |
| Dimensions (W x H x D) | 5 1/8 x 1 5/8 x 6 inches (128 x 40 x 150 mm) | 8 3/8 x 1 11/16 x 8 inches (210 x 42 x 202 mm) |
| Power requirements | DC 12V or AC 24 V | |
| Power consumption | 10.0 W max. | 18 W |
| Operating temperature | 14 to 122°F (-10 to 50°C) When PC card is attached: 14 to 104°F (-10 to 40°C) | |
| Storage temperature | -4 to 140°F (-20 to 60°C) | |
| Operating humidity | 20 to 80%, Non-condensing | |
| Storage humidity | 20 to 95%, Non-condensing | |
| Supplied accessories | | |
| | CD-ROM (setup program and User's Guide) (1), I/O receptacle (1), Installation manual (1) | CD-ROM (setup program and User's Guide) (1), I/O receptacle (2), AC adaptor, AC cord, Installation manual (1) |

* The compression ratio is based on an image of 24 bits per picture element (8 bits for each R,G and B)

Digital Hard Disk Recorder

| HSR-X206 | |
|---|---|
| Video | |
| Input | 6 channels, VBS, VS (BNC) 1.0 Vp-p, 75 Ω , unbalanced |
| Output (Loop through) | 6 channels, VBS, VS (BNC) 1.0 Vp-p, 75 Ω , unbalanced |
| Monitor output 1 | 1 channel, VBS, VS (BNC) 1.0 Vp-p, 75 Ω , unbalanced |
| Monitor output 2 | 1 channel, VBS, VS (BNC) 1.0 Vp-p, 75 Ω , unbalanced |
| Video compression | Motion-JPEG |
| Picture quality mode | HYPER: 52 kB/picture, SUPER: 44 kB/picture, HIGH: 32 B/picture, MID: 24 kB/picture, LOW: 17 kB/picture |
| Picture resolution | 720 x 240 pixels (Field mode) |
| Horizontal resolution | More than 500 TV lines (Hyper mode) |
| Signal to noise ratio | 48 dB (typical, Hyper mode) |
| Audio | |
| MIC input | 1 channel monaural (Mini jack), -60 dB, 10 k Ω , unbalanced |
| Line input | 1 channel monaural (Phono jack), -8 dB, 27 k Ω , unbalanced |
| Line output | 1 channel monaural (Phono jack), -8 dB, 600 Ω , unbalanced |
| Signal to noise ratio | 40 dB (typical) |
| Distortion | Less than 4 % at 1 kHz |
| Network Interface | |
| Ethernet | 100Base-TX/10Base-T |
| Alarm and Control Inputs/Outputs | |
| Alarm in 1-6 | Normal open, Low active |
| Sensor Alarm out 1-6 | Open collector, Low active |
| Remote 1/Remote 2 | 2-wire type with resistance-based identification system |
| Alarm out | Open collector, Low active |
| Alarm reset | Incl. video loss reset, normal open, Low active |
| Clock set in | Normal open, Low active |
| Clock set out | 5 V/5.7 k Ω , Low active |
| Non rec out | Video loss alarm selectable, 5V/5.7 k Ω , Low active |
| Warning out | 5 V/5.7 k Ω , Low active |
| Disk full out | 5 V/5.7 k Ω , Low active |
| Alarm full out | 5 V/5.7 k Ω , Low active |
| External timer in | Normal open, Low active |
| General | |
| Weight | 14 lb 1 oz (6.4 kg) |
| Dimensions (W x H x D) | 16 ⁵ / ₈ x 3 ⁷ / ₈ x 14 ⁷ / ₈ (420 x 96 x 376 mm) |
| Power requirements | AC 120 V, 60 Hz |
| Power consumption | 32 W |
| Operating temperature | 41 to 104°F (5 to 40°C) |
| Operating Humidity | Less than 80% |
| HDD capacity | 320 GB (160 GB x 2) |
| Supplied accessories | |
| AC power cord (1), Power cord tie (1), Rack mount kit (1), Operation Manual (1), Ferrite core (HSR-X206 (2), HSR-X206P (4)) | |

Systems and Software

| IMZ-RS300 Series | |
|---|---|
| Intelligent Monitoring Software | |
| Operating system* | Windows 2000, Windows XP or Windows 2003 Server |
| Processor | CPU: Pentium IV 2.4 GHz or higher |
| Memory | RAM: 512 MB or more |
| HDD | 2 GB spare capacity |
| Video Card | 1024 x 768, 16/24-bit color |
| Network Interface Card (NIC) | 100Base-T |
| Display | Full-color display |
| Web Gateway | |
| Operating system | Windows 2000 or Windows XP |
| Java Runtime** | Java Runtime Environment 1.4.2 |
| Web Application Server** | Apache Tomcat 5.0.18 |
| Web Browser | Internet Explorer Version 6.0 or later |
| Processor | CPU: Pentium IV 2.4 GHz or higher |
| Memory | RAM: 512 MB or more |
| HDD | 500 MB spare capacity |
| Video Card | 1024 x 768, 16/24-bit color |
| Network Interface Card (NIC) | 100Base-T |
| Compression Server | |
| Operating system | Windows 2000 or Windows XP |
| Processor | CPU: Pentium IV 2.4 GHz or higher |
| Memory | RAM: 512 MB or more |
| HDD | 500 MB spare capacity |
| Video Card | 1024 x 768, 16/24-bit color |
| Network Interface Card (NIC) | 100Base-T |
| Intelligent Monitoring Software Web Viewer | |
| Operating system | Windows 2000 or Windows XP |
| Java Runtime*** | Java Runtime Environment 1.4.2 |
| Web Browser | Internet Explorer Version 6.0 or Later |
| Processor | CPU: Celeron™ 2.0 GHz or higher |
| Memory | RAM: 512 MB or more |
| HDD | 500 MB spare capacity |
| Video Card | 1024 x 768, 16/24-bit color |
| Network Interface Card (NIC) | 100Base-T |

* Please contact your local Sony office or authorized dealer for compatibility information on the Linux Operating System.

** Both Java Runtime Environment and Web Application Server are included in the Web Gateway Module. *** Downloadable from Web Gateway.

SPECIFICATIONS

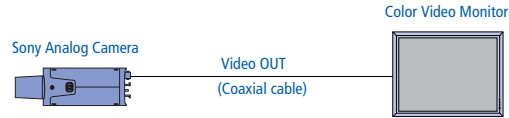
Monitors

| | LMD-1410SC | LMD-2010SC |
|-----------------------------------|--|---|
| Picture Performance | | |
| LCD Panel | 14-inch LCD Monitor (13.94" viewable area, measured diagonally) | 20-inch LCD Monitor (20.1" viewable area, measured diagonally) |
| Type | a-Si TFT Active Matrix LCD | |
| Resolution | 640 x 480 dots | |
| Pixel efficiency | 99.99% | |
| Dot pitch | | |
| Picture Size (H x W) | Approx. 11 1/4 x 8 3/8 inches (283.2 x 212.4 mm) | Approx. 16 1/8 x 12 1/8 inches (408.0 x 306.0 mm) |
| Aspect | 4:3 | |
| Colors | 16,770,000 colors | |
| Viewing Angle | 85°/85°/85°/85° (typical) (up/down/left/right contrast>10:1) | |
| Input/Output | | |
| Input | | |
| Line A | Composite (BNC x 1), Y/C (Mini DIN 4-pin x 1), Audio in (phono jack x 1) | |
| Line B | Composite (BNC x 1), Audio in (phono jack x 1) Component or RGB (BNC x 3), Audio in (phono jack x 1) | |
| Remote Parallel | Modular 8-pin | |
| Output | | |
| Line A | Composite (BNC x 1, automatic 75 Ω termination), Y/C (Mini DIN 4-pin x 1, automatic 75 Ω termination), Audio in (phono jack x 1) | |
| Line B | Composite (BNC x 1, automatic 75 Ω termination), Component or RGB (BNC x 3, automatic 75 Ω termination), Audio in (phono jack x 1) | |
| Audio Output | 0.5 W | |
| General | | |
| Power consumption | Approx. 50 W | Approx. 86 W |
| Power requirement | AC 100 to 240V, 50/60Hz | |
| Operating temperature | 0 to 35°C | |
| Operating humidity | 30 to 85% (no condensation) | |
| Storage & Transport Temperature | -10 to 40°C | |
| Storage & Transport Humidity | 0 to 90% | |
| Operating/Storage/Trans. Pressure | 700 to 1060 hPa | |
| Dimensions (W x H x D) | | |
| Dimension with stand | Approx. 13 5/8 x 13 7/8 x 10 1/2 inches (343 x 352 x 265 mm) | Approx. 18 5/8 x 17 3/8 x 10 1/2 inches (470 x 440 x 265 mm) |
| Dimension without stand | Approx. 13 5/8 x 12 x 3 1/2 inches (343 x 304 x 87mm) | Approx. 18 5/8 x 15 5/8 x 2 inches (470 x 394 x 87mm) |
| Weight | | |
| Panel & Stand | Approx. 15 lb 3 oz (6.9 Kg) | Approx. 21 lb 6 oz (21 lb 6 oz) |
| Panel only | Approx. 11 lb 7 oz (5.2 kg) | Approx. 17 lb 10 oz (8.0 kg) |

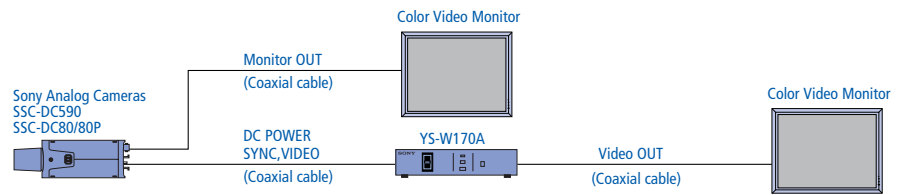
SYSTEM CONFIGURATIONS

Analog Cameras

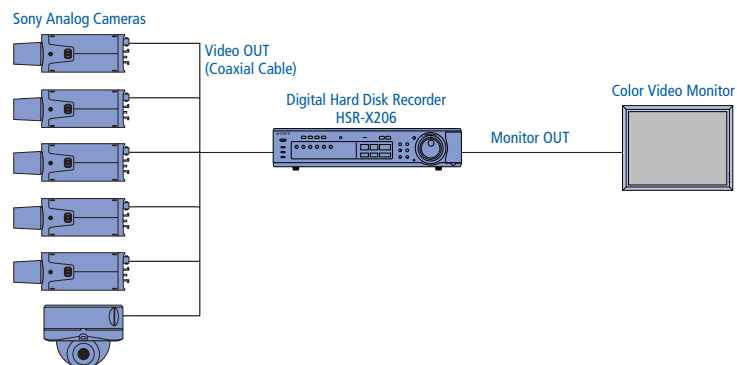
Single Camera Operation



Single Camera Operation (Using the YS-W170A Camera Adaptor)



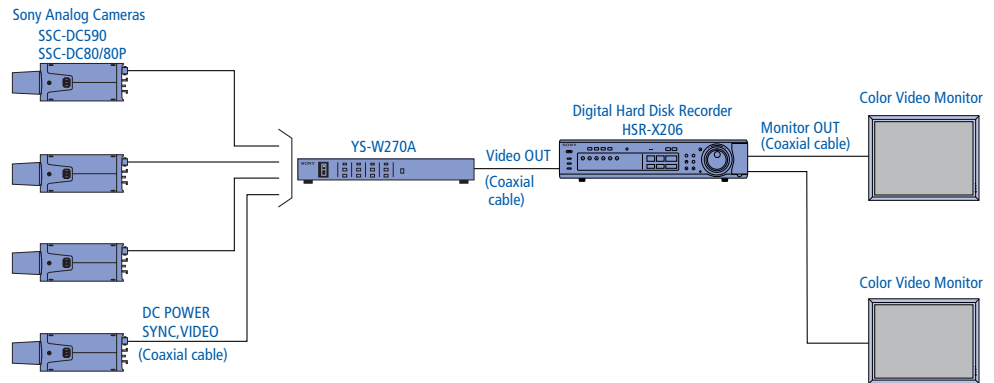
Multiple Camera Operation



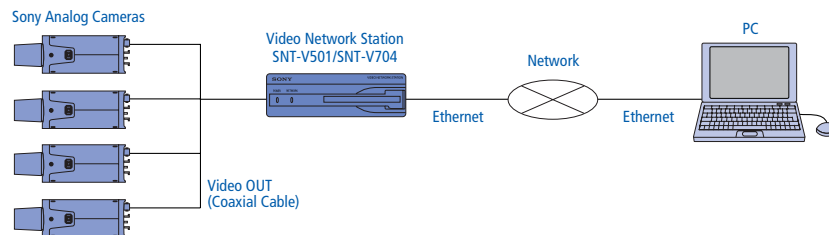
SYSTEM CONFIGURATIONS

Analog Cameras

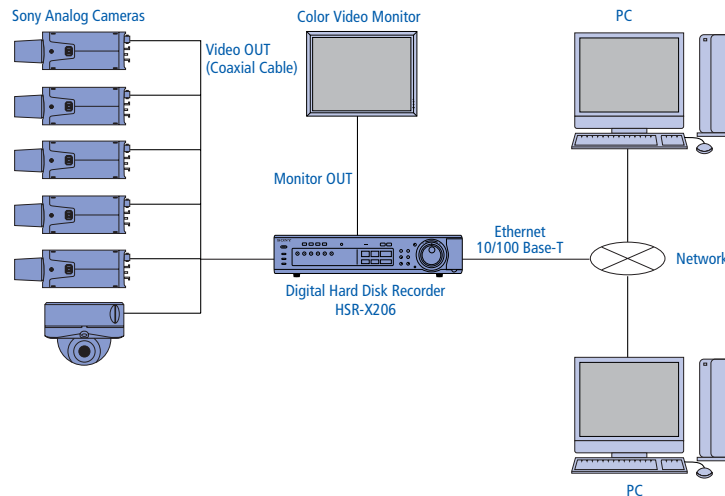
Multiple Camera Operation (Using the YS-W270A Camera Adaptor)



Multiple Camera Operation over Network



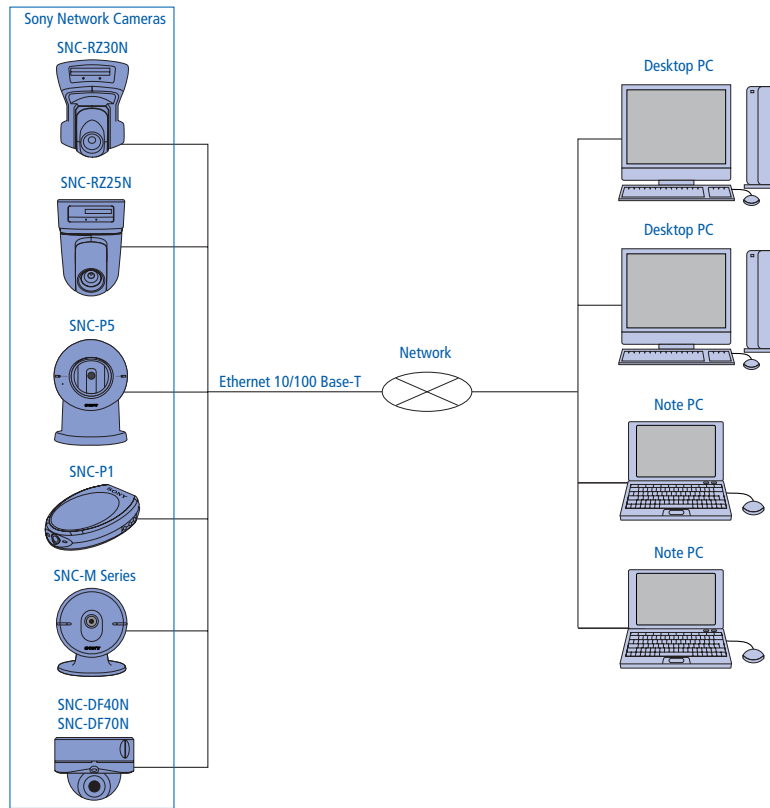
Multiple Camera Operation over Network (Using the HSR-X206)



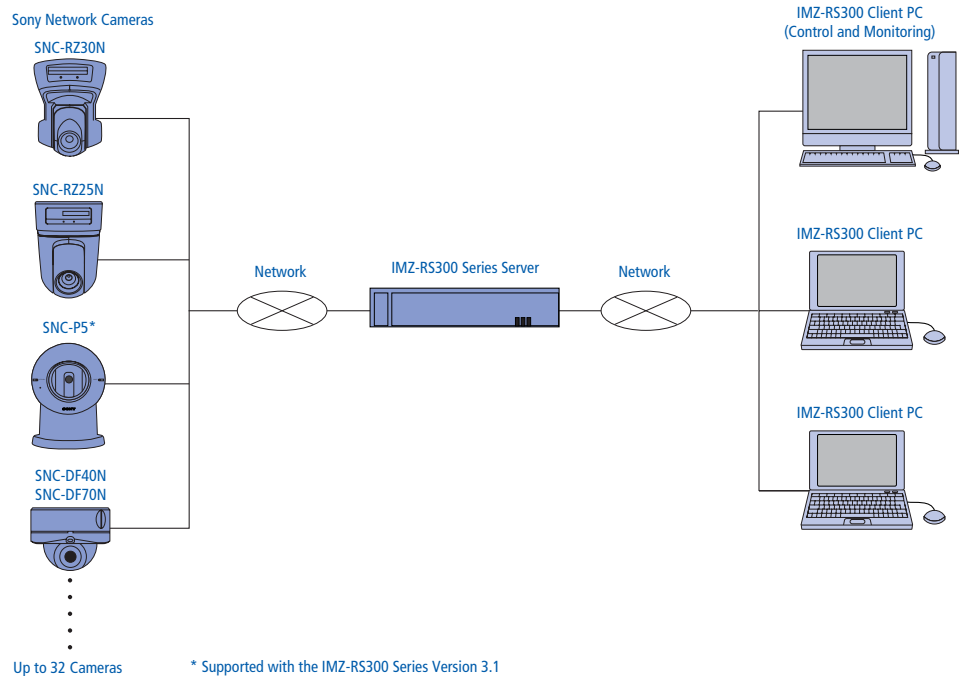
SYSTEM CONFIGURATIONS

Network Cameras

Single or Multiple Camera Operation



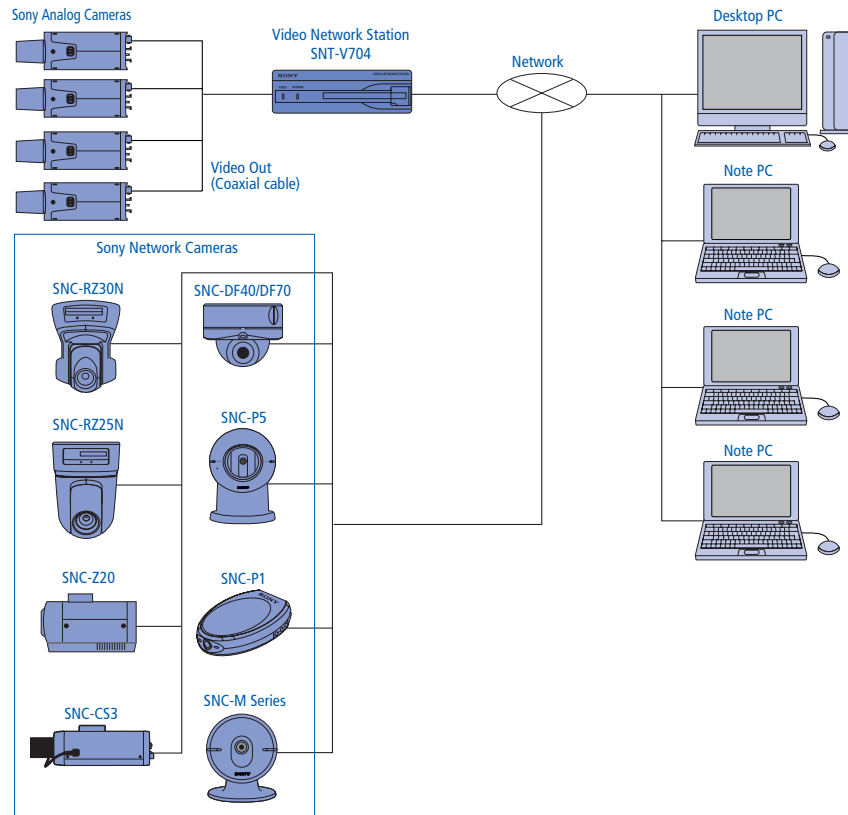
IMZ-RS300 Series Operation



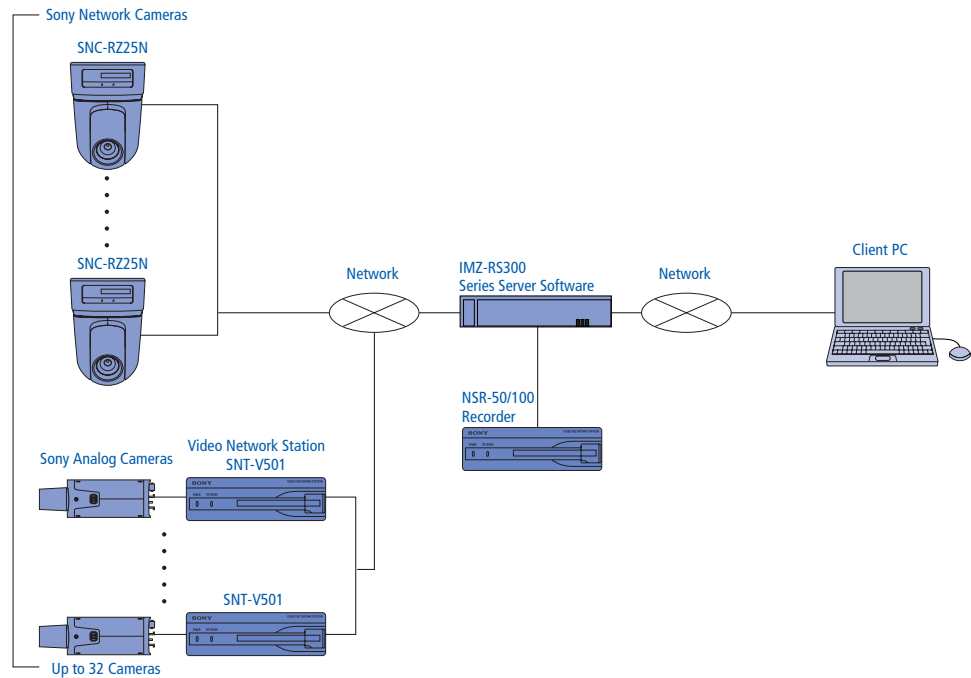
SYSTEM CONFIGURATIONS

Network Cameras

Single and Multiple Camera Operation



NSR-50/100



GLOSSARY

Activity Detection

A method of detecting activity in an image. Activity detection compares illumination levels between frames on a pixel-by-pixel basis. If the average change in luminance level from one frame to the next is greater than a pre-specified threshold, then an alarm is triggered.

Automatic Gain Control (AGC)

Amplifies existing video to help camera reproduce a video signal at very low light levels.

Adaptive Picture Control (APC)

Automatically detects the condition of the recording head and video cassette tape and then sets the optimum recording head current. Available on all SVT time lapse VCRs.

Adaptive Rate Control (ARC)

A technology that automatically detects and compensates for network traffic when transferring MPEG-4 image data over a network. In order to prevent "Drop Outs" when the network becomes congested, ARC first lowers the data bit rate, and if the network is still congested, then ARC lowers the frame rate.

Aperture/Sharp Mode

Makes object outline in the picture appear sharper. Ideal for situations where an object merges into the scene with a similar shade of color.

Auto Tracing White Balance (ATW)

Adjusts the white balance automatically in response to varying light conditions.

ATW PRO

Ideal for frequently changing light conditions and applications where the operator needs to see objects as they appear to the eye. Effective operational color range is 2500 to 6000K.

Auto Iris

Automatically adjusts the iris element as the light level changes.

Auto White Balance (AWB)

Automatically memorizes adjusted white balance values.

Backlight Compensation (BLC)

Picture brightness is adjusted automatically depending on lighting conditions. Overcomes the problem of strong backlight which often causes the subject of the picture to be cast into shadow.

C Mount

Type of camera mount which measures 17.5 mm from the lens rear mounting surface to the camera's CCD.

CS Mount

Type of camera mount which measures 12.5 mm from the lens rear mounting surface to the camera's CCD. Can be used with C mount cameras by adding a 5 mm spacer.

DC Servo Auto Iris Lens

Lens that relies on DC power from the camera to control the iris.

Digital Signal Processing (DSP)

Converts the analog signal from a CCD image sensor into a digital signal through an internal A/D converter. The signal is then broken down into luminance and chrominance components for processing, adjustment and feature enhancement enabling many digital features such as backlight compensation.

Duplex

Type of multiplexer allowing simultaneous live monitoring or playback as images are being recorded.

DynaView Technology

A technology used to capture clear images even in extremely high-contrast lighting environments. When using DynaView technology, the camera actually captures the image twice - once at a normal shutter speed and then at a high shutter speed - and creates a composite high-contrast image.

Exwave HAD Technology

Sony technology employing advanced sensor structure within the CCD resulting in improved sensitivity over Super HAD technology.

JPEG

A compression method used in conventional surveillance and monitoring systems that is ideal for capturing high-quality still images.

Motion Detection

A method of detecting motion in an image. Motion detection uses vector information available and inherent in MPEG-4 compression. Motion detection has an advantage over activity detection because it can reduce the number of false alarms caused by noise.

MPEG-4

A compression method that takes into account only the movement in an image when capturing data. MPEG-4 compression is ideal for data that is transferred over networks because of its relatively small data size.

Sensitivity

The amount of light falling on a scene measured in lx.

Simplex

Type of multiplexer which allows the user to choose between live monitoring, recording or playback.

Smear

Vertical streaks above and below a brightly lit object or light source when observed on the monitor. Vertical lines on the screen are caused by the leakage of unwanted light onto the vertical shift register of the CCD.

SuperExwave Technology

Sony camera technology that uses CCDs with advanced photo-diode sensors capable of capturing a great amount of light especially in the near infrared (IR) region of the spectrum. As a result, sensitivity levels have been improved by approximately 10% in the visible region, and approximately 50% in the near IR region compared to Exwave HAD technology.

Super HAD Technology

Improves camera sensitivity by optimizing the shape of on-chip micro lenses on the CCD in order to minimize the invalid area between micro lenses of each pixel.

Synchronization

Used in multi-camera installations where automatic switching is employed and allows roll-free switching from camera to camera.

Triple Multiplexing

Video, sync and power transmitted over a single coaxial cable.

GLOSSARY (CONT.)

Turbo AGC

Powerful automatic gain control function. Increases range of video gain compared to conventional AGC resulting in greater sensitivity.

Variable Gamma Curve

Four selectable gamma correction curves that control the brightness of captured images so that they can be displayed accurately (i.e. not too bright and not too dark).

Video Servo Auto Iris Lens

Lens that relies on video input to control the iris opening. When the video level is high, the lens iris closes. When the video level is low, it opens.

INDEX

| Products | Features | Specifications |
|----------------------------|----------|----------------|
| HSR-X206 | 23 | 36 |
| IMZ-RS300 | 21 | 36 |
| LMD-1410SC | 24 | 37 |
| LMD-2010SC | 24 | 37 |
| SNC-CS3N | 7 | 27 |
| SNC-CS50N | 7 | 25 |
| SNC-DF40N | 8 | 28 |
| SNC-DF70N | 8 | 28 |
| SNC-M1/SNC-M1W | 10 | 30 |
| SNC-M3/SNC-M3W | 10 | 30 |
| SNC-P1 | 9 | 29 |
| SNC-P5 | 9 | 29 |
| SNC-RX550N | 5 | 25 |
| SNC-RZ25N | 6 | 26 |
| SNC-RZ30N/2 | 6 | 26 |
| SNC-Z20N | 6 | 27 |
| SNT-V501 | 22 | 35 |
| SNT-V704 | 22 | 35 |
| SSC-CD43V | 16 | 33 |
| SSC-CD73V | 16 | 33 |
| SSC-DC174 | 14 | 32 |
| SSC-DC374 | 14 | 32 |
| SSC-DC590/SSC-DC593 | 13 | 32 |
| SSC-DC80/SSC-DC83 | 12 | 31 |
| SSC-E453 | 9 | 31 |
| SSC-E473 | 9 | 31 |
| SSC-M183 | 15 | 33 |
| SSC-M383 | 15 | 33 |
| UNI-PM183/UNI-PM383 Series | 18 | 34 |
| UNI-PC593 Series | 18 | 34 |
| UNI-PC453/UNI-PC473 Series | 18 | 34 |
| YS-W170A | 17 | 34 |
| YS-W270A | 17 | 34 |

For Network Camera Users;

You should keep in mind that the images or audio* you are monitoring through IP network camera may be protected by privacy and other legal rights, and the responsibility for making sure you are complying with applicable laws is yours alone. Access to the images and audio* of IP network camera is protected only by a user name and the password you set up. No further authentication is provided nor should you presume that any other protective filtering is done by the service. Since the service is Internet-based, there is a risk that the image or audio* you are monitoring can be viewed or used by a third-party via the network.

*For equipments that support audio.

SONY®

Sony Electronics Inc.
1 Sony Drive
Park Ridge, NJ 07656
www.sony.com/security

S-Catalog05
MK10187V3

©2005 Sony Corporation. All rights reserved.

Reproduction in whole or in part without permission is prohibited.
Features and specifications are subject to change without notice.

All non-metric weights and measurements are approximate.

Sony, SuperExwave, Exwave HAD, DynaView, IPELA, Memory Stick, Memory Stick Duo,
Memory Stick PRO, Super HAD, UniPak are trademarks of Sony.

Compact Flash is a trademark of Scandisk.

Pentium III and Pentium IV are trademarks of Intel.

PocketPC, Windows, Windows XP and Internet Explorer are trademarks of Microsoft Corp.

Celeron is a trademark of Intel.



Printed in USA (9/05)